

PHOTOGRAPHS

by

FRANCIS FRITH



(1822-1898)

Compiled from Various Sources

CMG Archives

<http://www.campbellmgold.com>

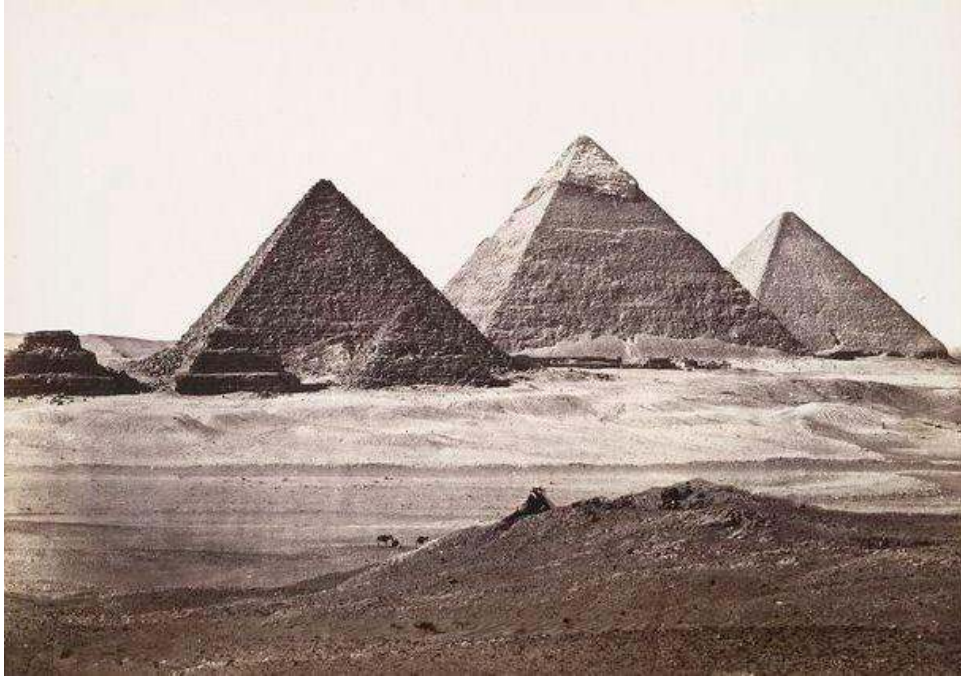
(2013)

--()--

EGYPT



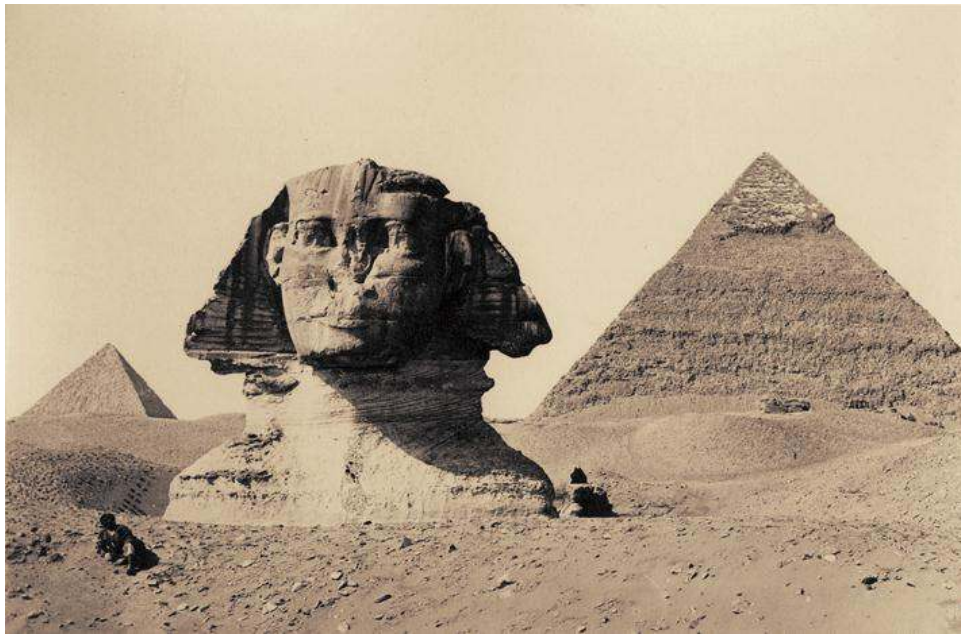
Francis Frith, 'Pyramids', Giza, Egypt, 1858



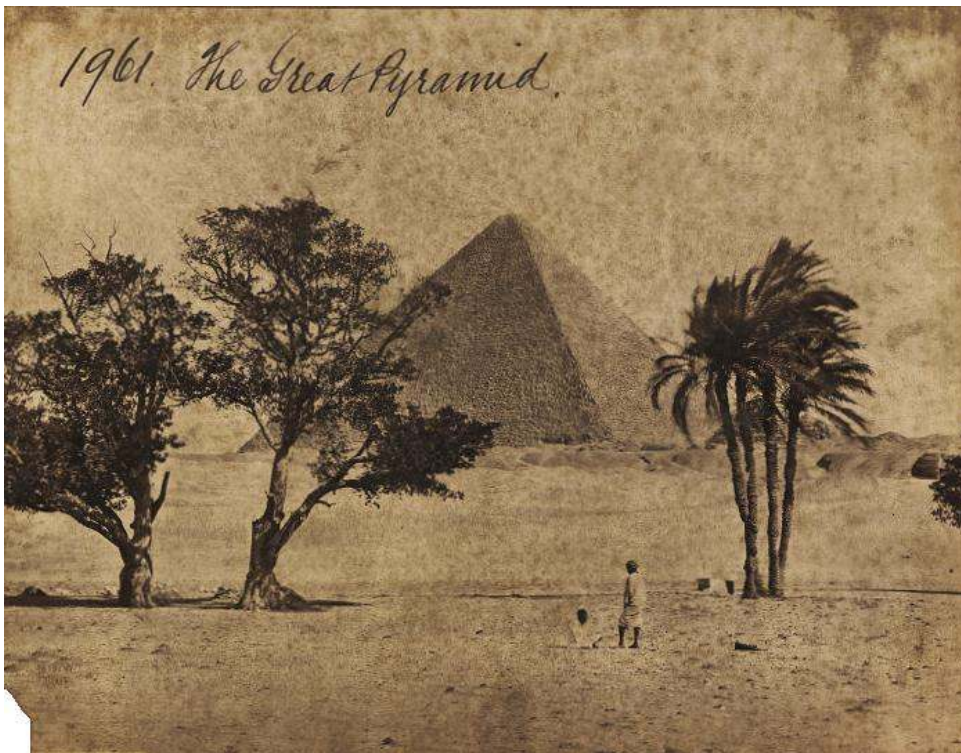
Francis Frith, 'Pyramids', Giza, Egypt, 1858



Francis Frith, 'The Sphinx', Giza, Egypt, 1858



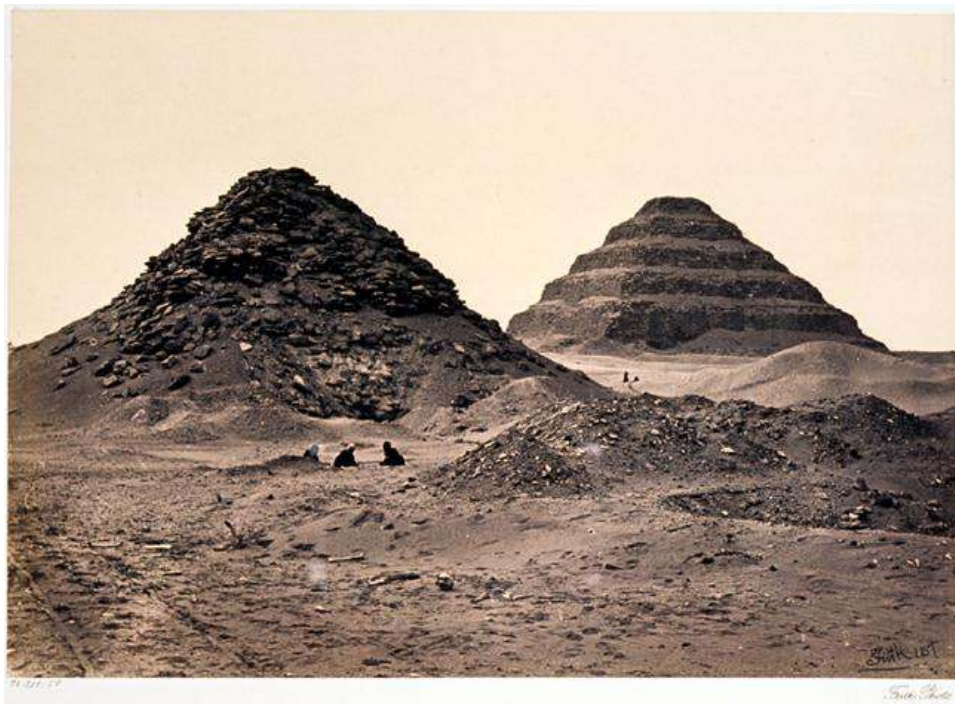
Francis Frith, 'The Sphinx', Giza, Egypt, 1858



Francis Frith, 'The Great Pyramid', Giza, Egypt, 1858



Francis Frith, 'The Second Pyramid from the South East', Giza, Egypt, 1858



Francis Frith, 'Pyramid of Djoser (Zoser) or step pyramid', Saqqara necropolis, Northwest of the city of Memphis, Egypt, 1858



*Francis Frith, 'The Pyramids of Dahshoor',
40 kilometres south of Cairo, Egypt, 1858*



Francis Frith, 'The Rameseum of El-Kurneh', Thebes, Egypt, 1858



Francis Frith, 'The Rameseum of El-Kurneh', Thebes, Egypt, 1858



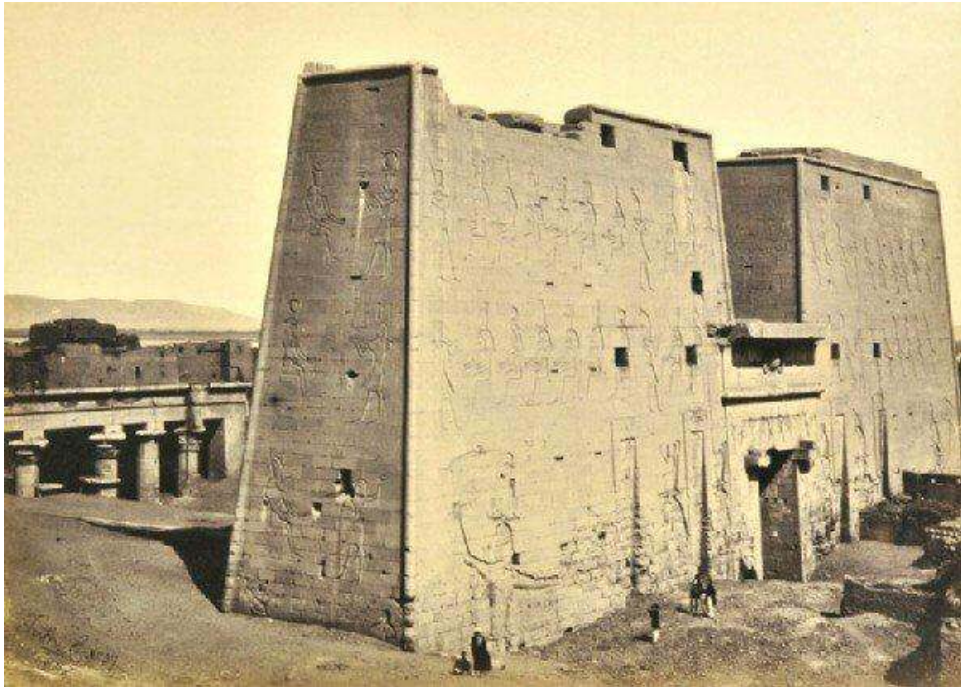
Francis Frith, 'Fortified Gate, Temple of Rameses III', Thebes, Egypt, 1858



Francis Firth, 'The Hypaethral Temple', Island of Philae', Egypt, 1857



Francis Frith - 'The Colonnade', Island of Philae, Egypt, c.1857



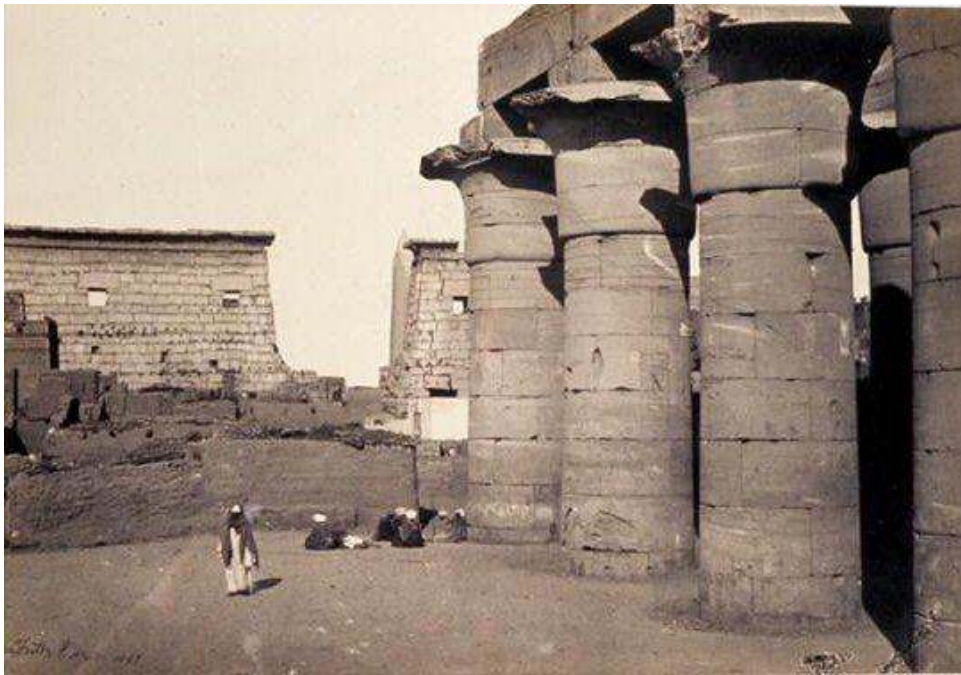
Francis Frith, 'The Great Pylon at Edfou', Egypt, 1857



Francis Frith, 'Temple of Hathor Façade', Dendera, Egypt, 1857



Francis Frith, 'The Colossi of Memnon', Luxor, Egypt, 1857



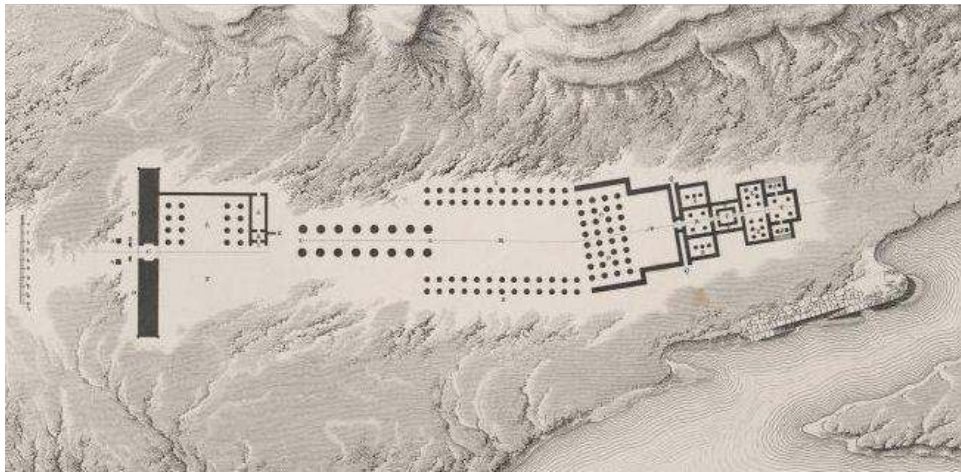
Francis Frith, 'Temple of Luxor', Egypt, c.1857



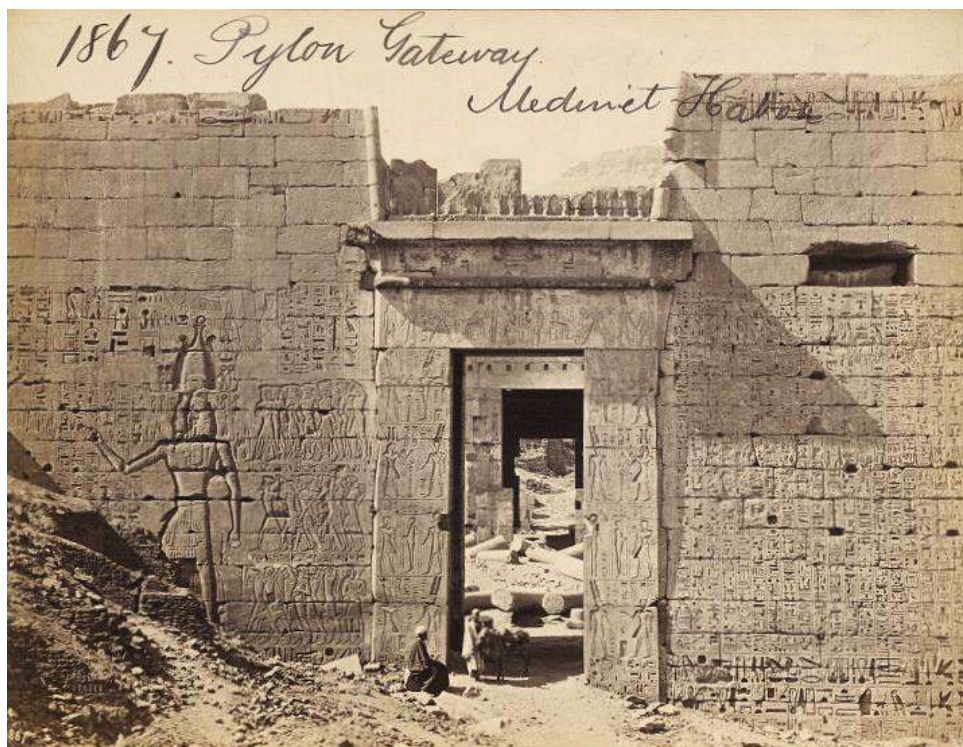
Francis Frith, 'Temple of Luxor', Egypt, c.1857



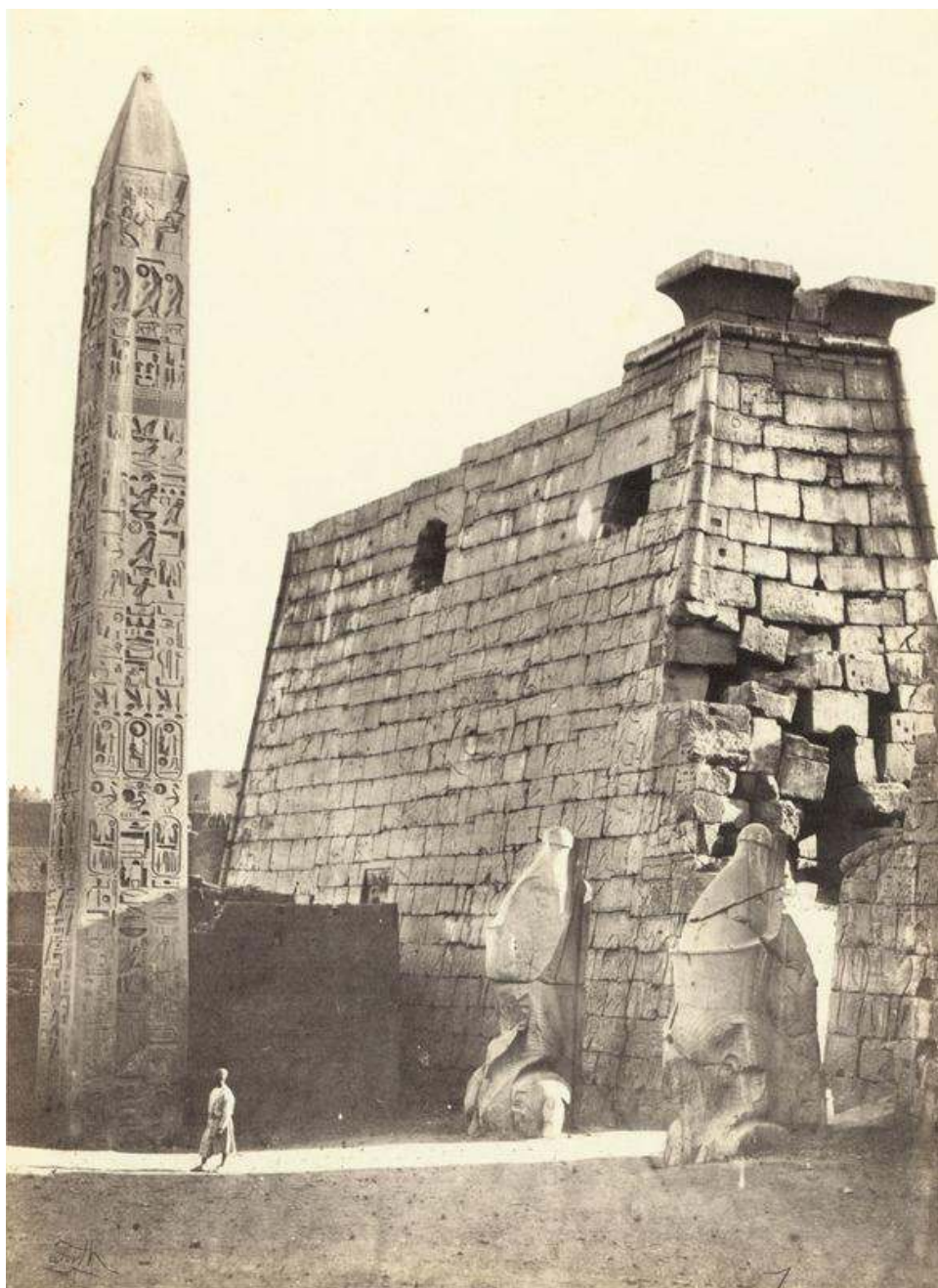
Francis Frith, 'Temple of Luxor', Egypt, c.1857



Vivant Denon, 'Map and Ground Plan of the Temple of Luxor', Egypt, 1800



Francis Frith, 'Pylon Gateway', Medinet Habou, Luxor, Egypt, c.1857



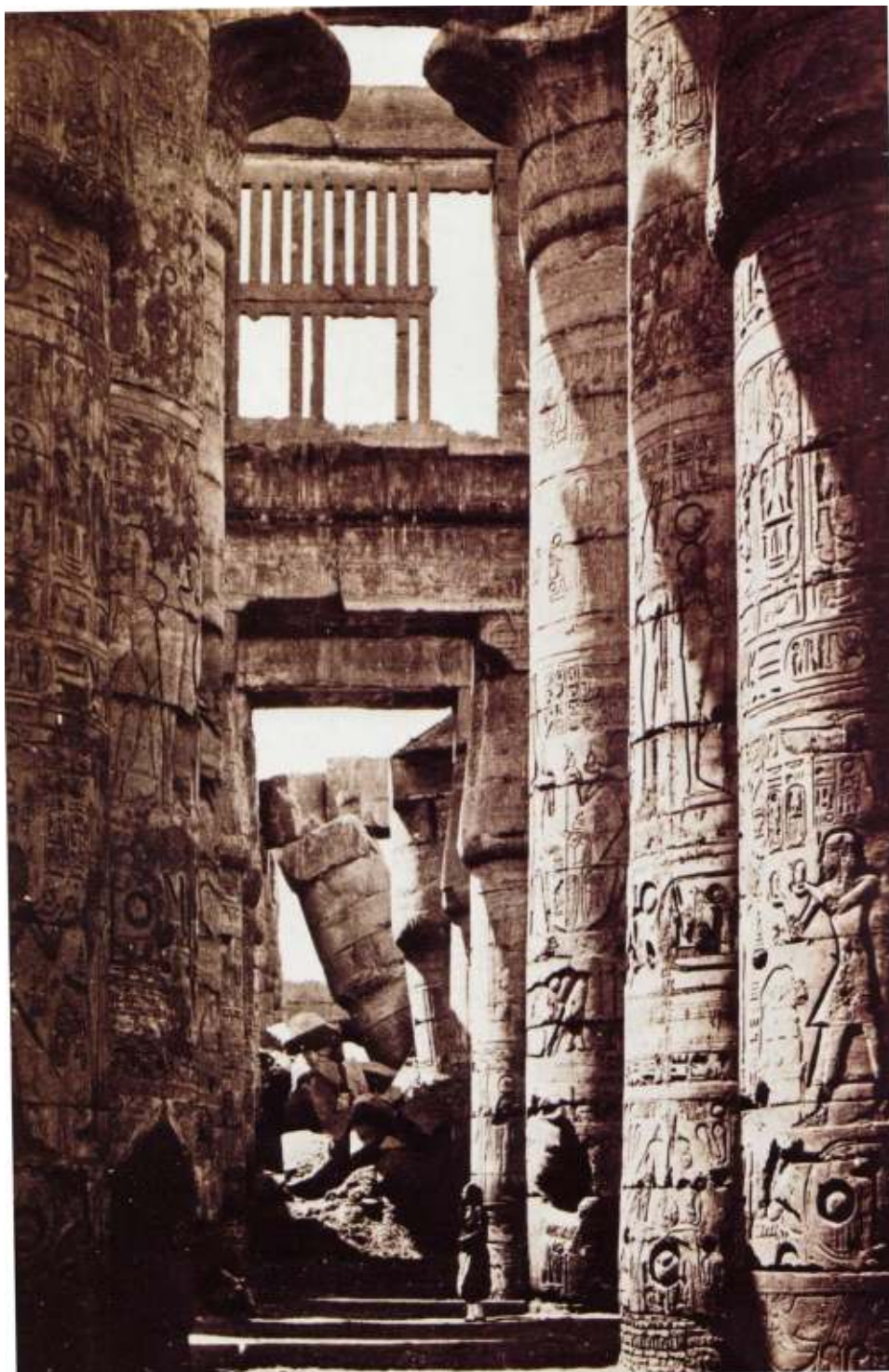
Francis Frith, 'First Pylon and Obelisk of Rameses II, Temple of Amen', Luxor, c.1857



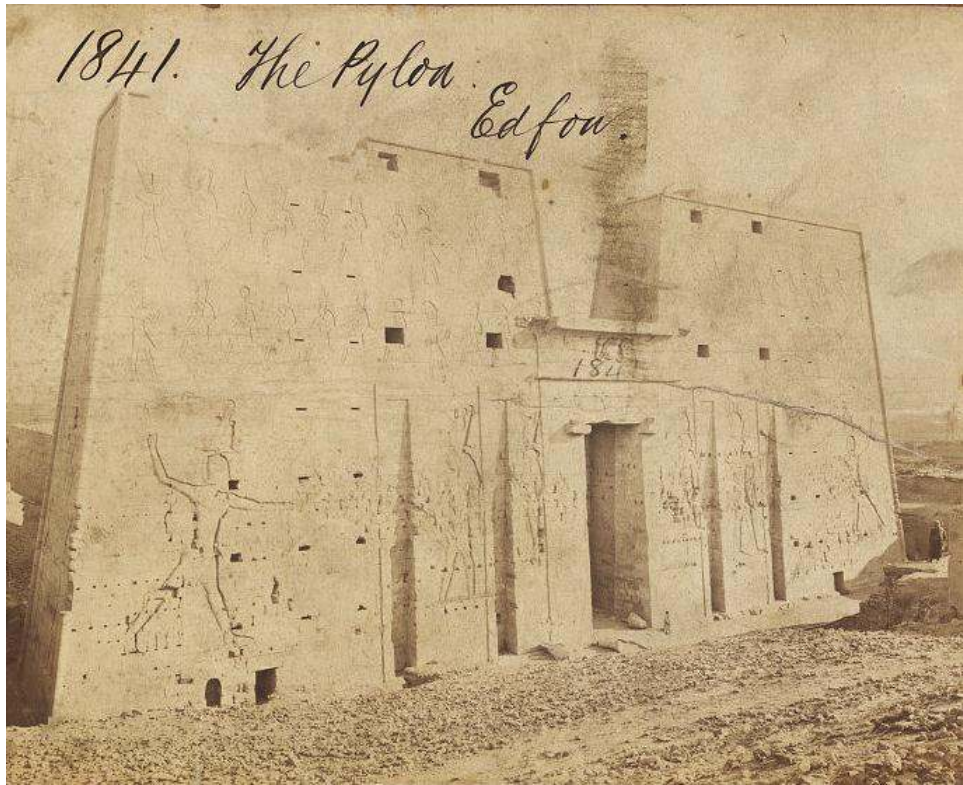
Francis Frith, 'The Ruined Pylon', Carnac, Egypt, c.1856



Francis Frith, 'Pylons from Salt Lake', Carnac, Egypt, c.1856



Francis Frith, 'A Hall of Columns' in Carnac, Egypt, 1856



Francis Frith, 'The Pylon, Temple of Edfou', Egypt, c.1857



Francis Frith, 'Cairo', Egypt 1857



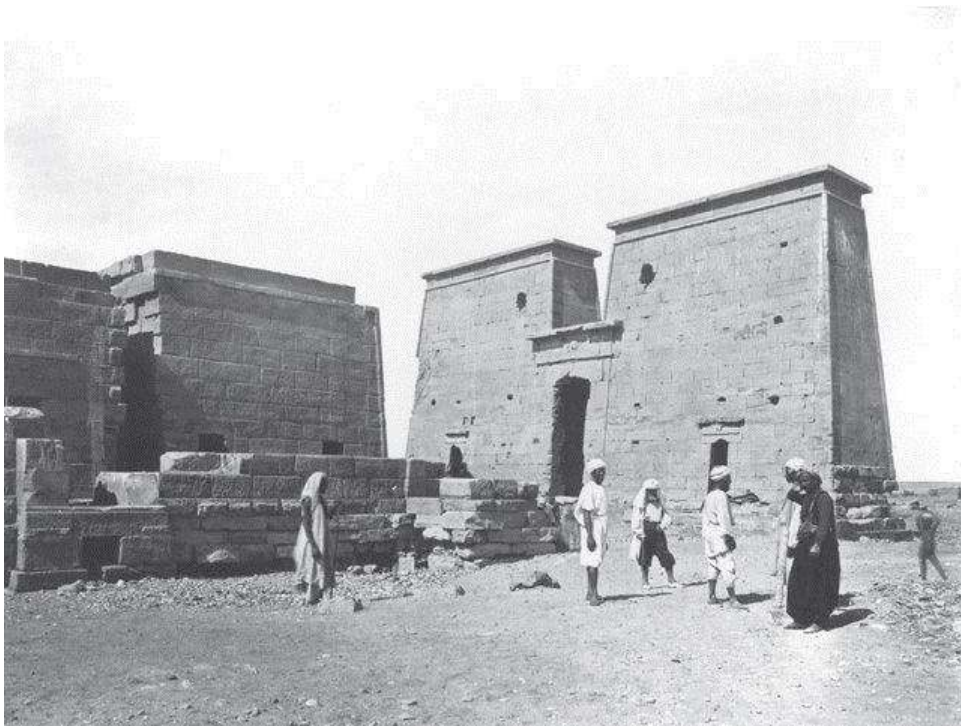
Francis Frith, 'The Mosque of Kaitbey', Cairo, Egypt, 1858



Francis Frith, 'Temple of Serapis', Maharaka, Egypt, 1857

--()--

NUBIA



Francis Frith, 'The Temple of Ad-Dakka (el Dakka)', Nubia, c.1860s



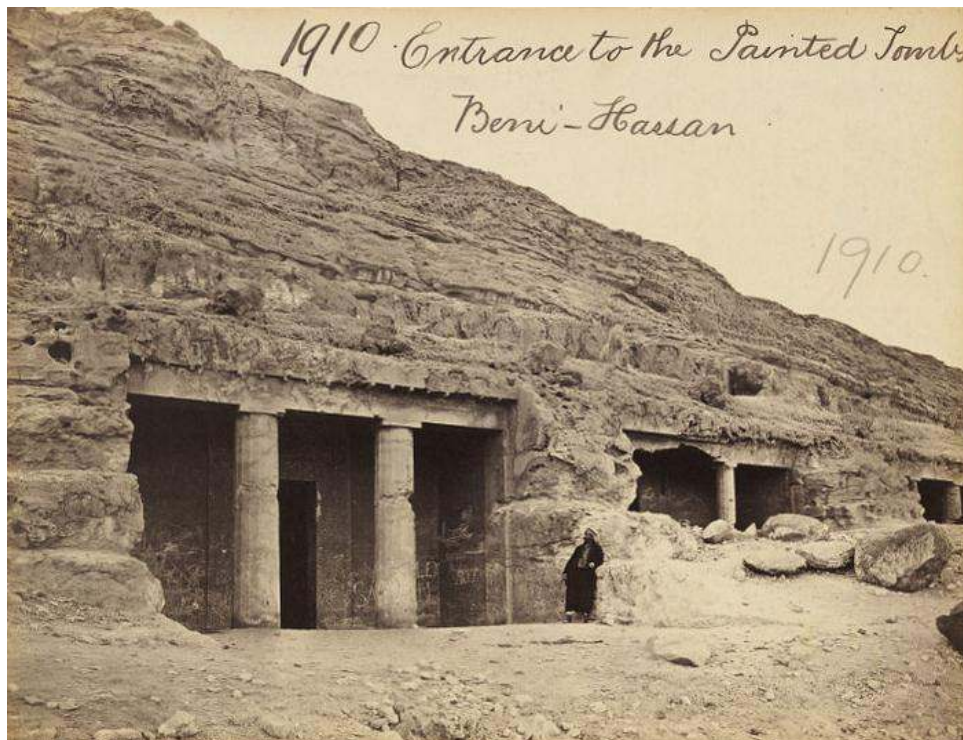
Francis Frith, 'The Temple of Dabod', Nubia, c.1860s



Francis Frith, 'The columns of Aamara Temple', Nubia, 1862

--()--

TUNISIA



Francis Frith, 'Entrance to the Painted Tombs. Beni-Hassan', Tunisia, c.1850s

--()--

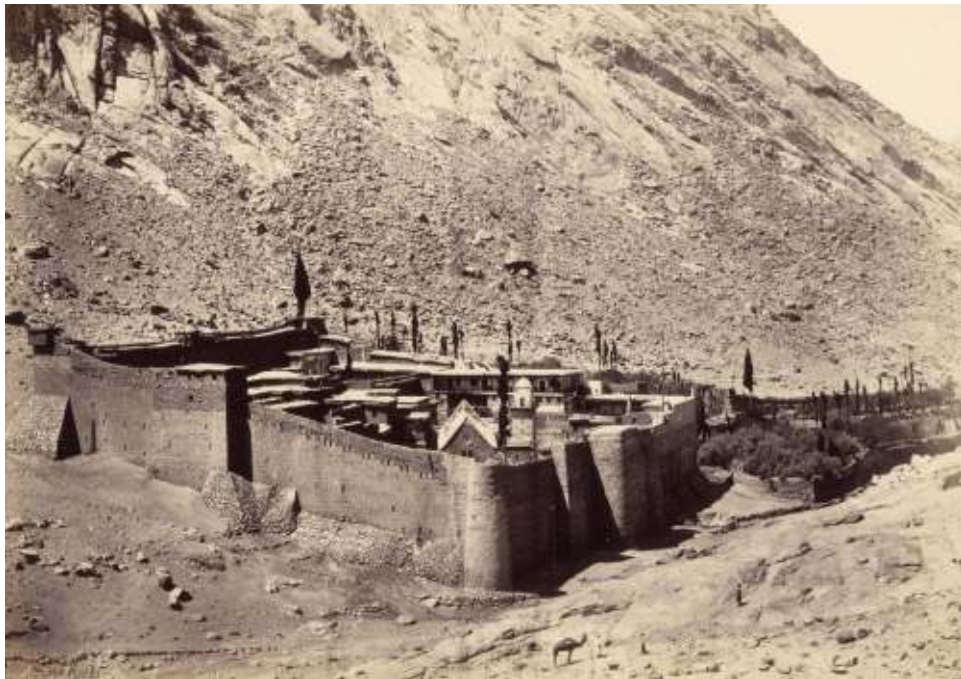
PALESTINE



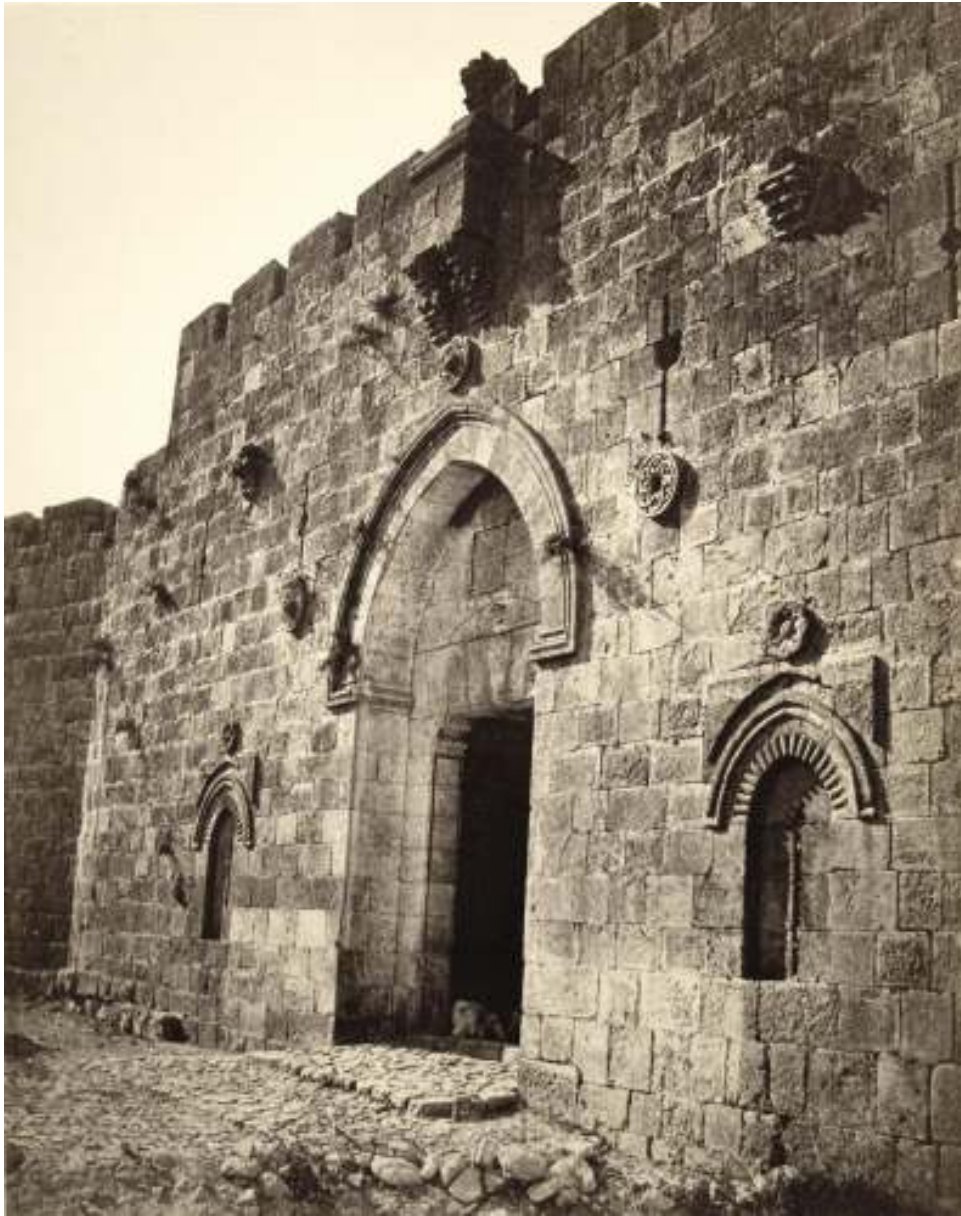
Francis Frith, 'Jerusalem - view from the Citadel', c.1858



Francis Frith, 'Jerusalem, from Mount Zion, with Mosque of Omar', c.1858



Francis Frith, 'The Convent of Sinai', 1858



Francis Frith, 'The Zion Gate', Jerusalem, c.1858

--()--

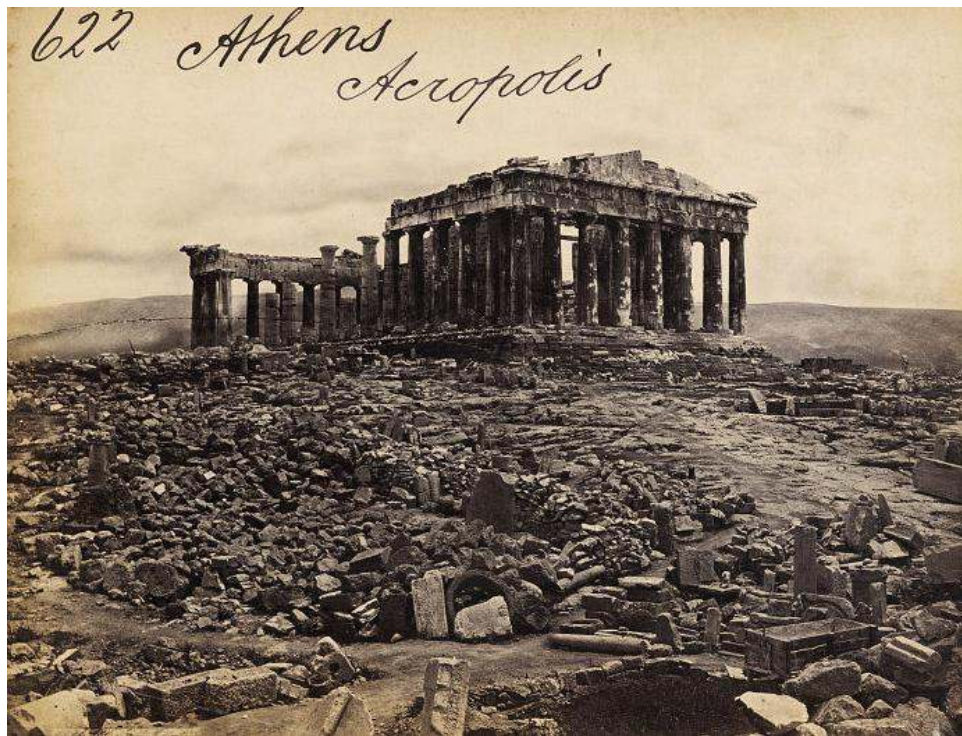
ITALY



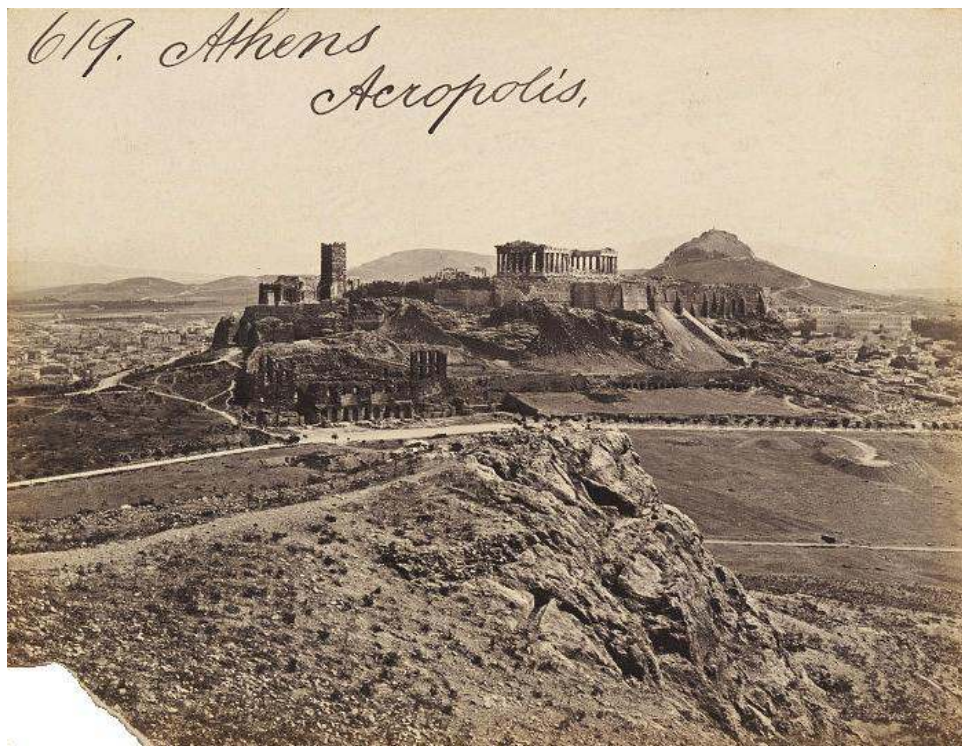
Francis Frith, 'Colosseum', Rome, c.1870

--()--

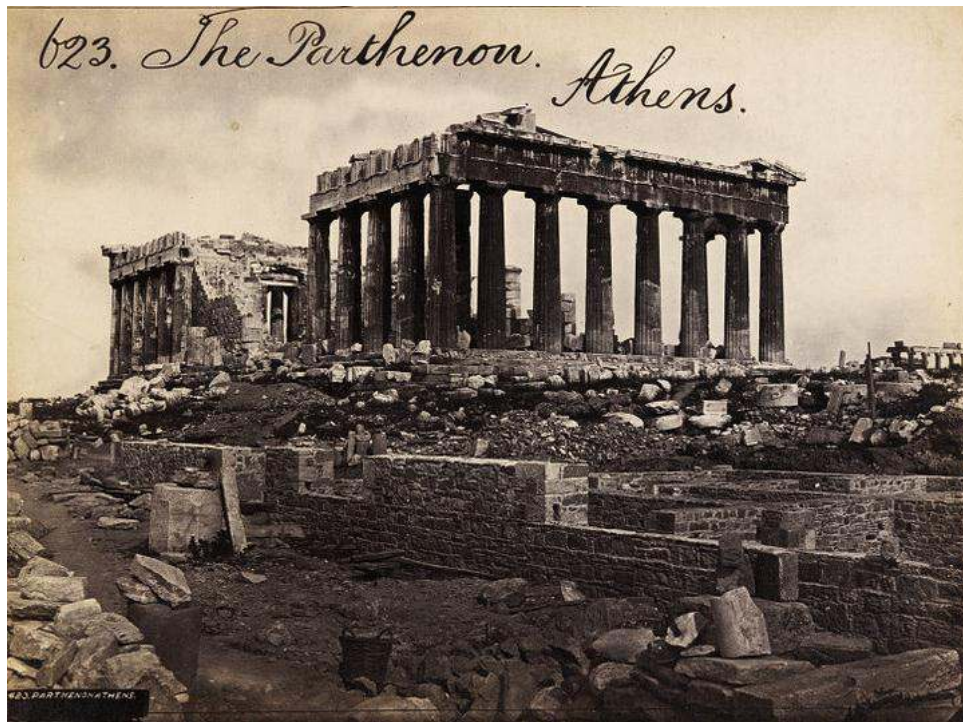
GREECE



Francis Frith, 'The Acropolis', Athens, Greece, c.1850s



Francis Frith, 'The Acropolis', Athens, Greece, c.1850s



Francis Frith, 'The Parthenon', Athens, Greece, c.1850s

--()--

INDIA



Francis Frith, 'Hoshungabad, The Bathing Ghat with Temple', India, c.1850s



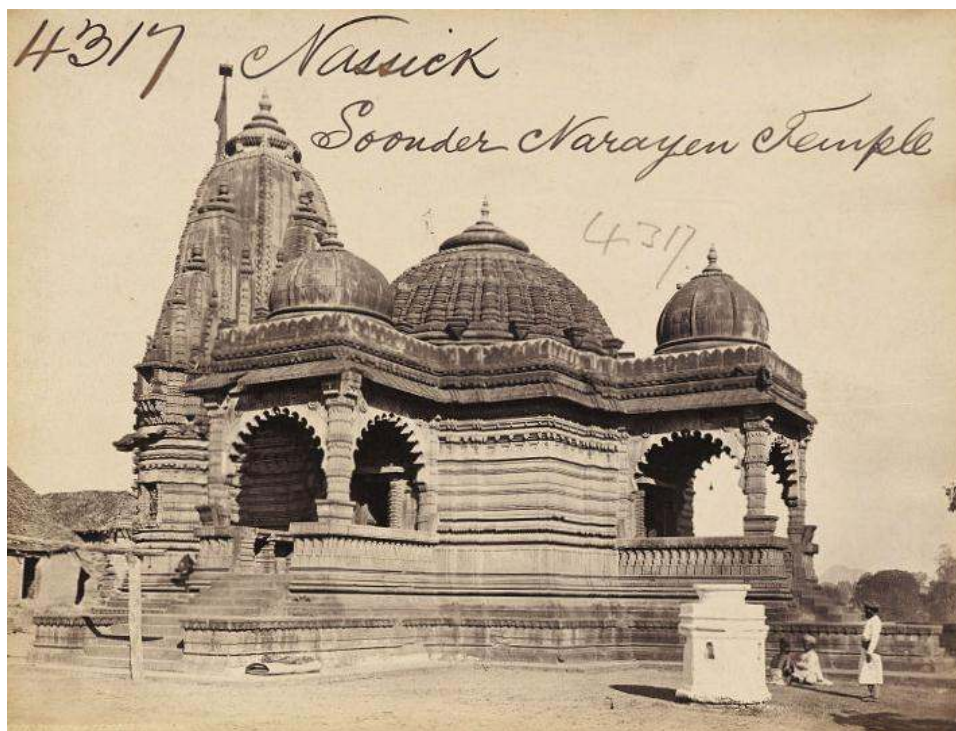
Francis Frith, 'Sculptured Arch and Iron Pillar', Delhi, India, c.1850s



Francis Frith, 'Ancient Temple of the Tukht-i-Soliman', Srinagar, Cashmere, India, c.1850s



Francis Frith, 'La Martiniere, Lucknow', India, c.1850s



Francis Frith, Nassick. Soonder Narayen Temple, India, c.1850s

--()--

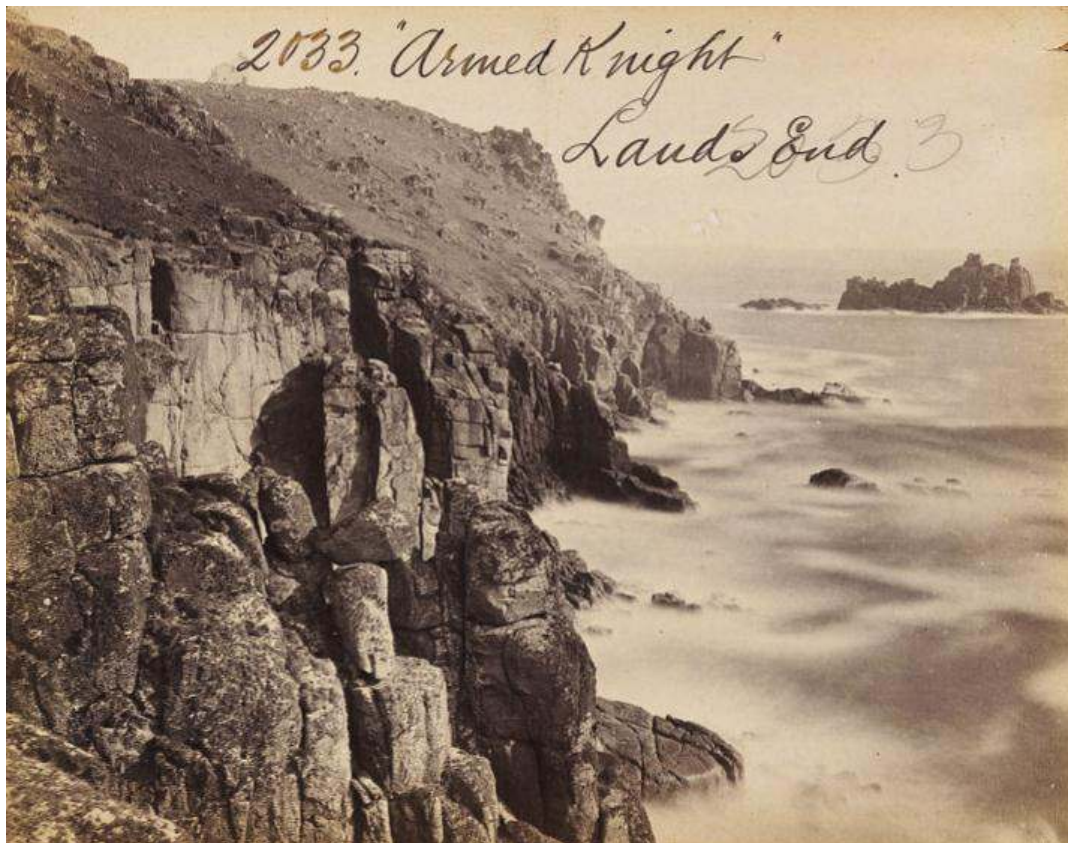
GREAT BRITAIN



Francis Frith, 'Hastings from the beach', England, 1864



Francis Frith, 'Roman Baths', Bath, England, c.1880



Francis Frith, 'Armed Knight', Land's End, England, c.1850s



Frith Family on Ryde Pier, date unknown

--()--

The Frith Archive

"The Frith archive was founded by Francis Frith, the pioneer Victorian photographer, in 1860 and today contains over 330,000 photographs of some 7,000 towns and villages throughout Britain."

"Taken between 1860 and 1970 these form a unique and unequalled topographical record of Britain."

"The Archive provides an extraordinarily detailed visual record of the enormous social and structural changes that have taken place in Britain since 1860. For each town or village there is an average of 80 photographs. These were often taken from the same spot but many years apart, giving historians a unique opportunity to study landscapes, streets and buildings across a century and more of change."

<http://www.francisfrith.com/>



Frith Collection - Shop on The Sea Wall, Dymchurch, c1960

For more information about Francis Frith and The Francis Frith Collection:

<http://www.francisfrith.com/>

End

--()--

<http://www.campbellmgold.com>

15012013