

# **The Existential Timeline**

**by  
Campbell M Gold**

**(1994/2010)**

CMG Archives  
<http://campbellmgold.com>

--()--

## **Contents**

Introduction.....	1
Planes of Experiential Existence.....	2
Pre-Time Period .....	4
The Beginning of Time .....	6
The Earth Program - Geological Time .....	8
The Time of Joining.....	16
Controversy, Dissent, And Cohort Wars .....	19
Modern Civilizations .....	23
Modern Times .....	28
The 20th Century and Beyond .....	32
Appendix - Universal Planes.....	34
Appendix - Movement of early man .....	36
Appendix - Human Longevity.....	38
Appendix - General Longevity.....	39

--()--

## **Introduction**

The following material overviews the existential time line; however, please note that periods and events may be approximate. Consequently, it is recommended that the projection of consciousness be employed in both exploring and verifying the time line.

## **Four Considerations**

When exploring the existential passing of time, there are four considerations:

- 1) The revealed physical history with its associated physical evidence - geological, biological, anthropological, etc.
- 2) The hidden history with only "inferred" and "circumstantial evidence" - spirit/esoteric, Atlantean, Cohorts, developmental programs, Cohort wars, etc.
- 3) The universally-determined cycles of experience. We have little or no control over these cycles and are inexorably carried forward on the "wave of the now".
- 4) The self-determined cycles of experience. The greater our experiential development (experiential motor-primacy), the greater the control we have over these cycles and the more effective we are in achieving our aspirations.

## Establishment of Reality (veritas)

The exploration of time, and the establishment of reality or veritas, is accomplished by the following process:

- 1) Observation - Observe and question all things
- 2) Gathering - Gather and collate the observations
- 3) Analysis - Analyse the observations for patterns
- 4) Hypothesis - Create a hypothesis based on the observed patterns
- 5) Prediction - Make predictions based on the hypothesis
- 6) Validation - Validate the predictions by appropriate experimentation
- 7) Model - Create a model of reality based on points 1-6

--()--

## Planes of Experiential Existence

There are four experiential planes where we expand our consciousness through personal experience: 1) the physical plane, 2) the etheric plane, 3) the mental plane, and 4) the conscious plane.

[See "Appendix - Universal Planes"  
for a complete graphic overview  
of the Universal Planes](#)

The **physical plane** contains the physical universe, and is experienced through the individual's **physical body** (taste, touch, sight, smell, and hearing).

The **conscious**, **mental**, and **etheric planes** make up the "spirit world", which is perceived through the **spirit-form**. The **spirit-form** is a composite of the conscious, mental, and etheric bodies. Conscious and mental bodies can only perceive the spirit world, whereas the etheric body actually experiences it.

Finally, there is the **source plane** that exists above the spirit world. This infinite plane is the origin of every-thing, and is the source and sum of all consciousness. However, because the source is every-thing in infinite balance, it is also the "no-thing" where every-thing converges into infinite nothing.

The following table summarises the various facets of our existence, and includes both o.e.v Existential and *Traditional Terms*:

Facets of Existence			
Plane (Body)	Experience (Type)	Keywords	<i>Traditional Terms</i>
Physical (Physical body)	Sensation (Experiential)	I Sense	<i>Earth</i> <i>Body of Matter</i>
Etheric (Etheric Body)	Emotion (Experiential)	I Feel	<i>Etheric Plane</i> <i>Etheric Body</i>
Mental (Mental Body)	Cognition (Perception-only)	I See	<i>Astral Plane</i> <i>Astral Body</i>

Facets of Existence			
Plane (Body)	Experience (Type)	Keywords	<i>Traditional Terms</i>
Conscious (Conscious Body)	Projection (Perception-only)	I Move	<i>Mental Plane</i> <i>Mental Body</i>
Source No Body	Existence (Perception-only)	I Am	<i>Celestial Plane</i> <i>Soul</i>
Note: The physical and etheric bodies are experiential in function, whereas the mental and conscious bodies are perception-only in function			

See ["Appendix - Universal Planes"](#)  
for a complete graphic overview  
of the Universal Planes

--()--

## **Pre-Time Period**

### **-- The Source/Source Plane and No-thing --**

(Existence) Infinite origin of all things, and sum of all consciousness.

All things in infinite impotent balance, every-thing, the no-thing.

Source Will - to experience itself by infinite fragmentation and recombination.

The No-thing is the infinite everything in perfect balance - light and dark; hot and cold, etc, all converging at a single point which is no-thing.

**See "Appendix - Universal Planes"  
for a complete graphic overview  
of the Universal Planes**

### **-- Primary Soul Group (PSG) --**

Pool containing an infinite number of Conscious elements (We Are), from which the experiential planes are manifested

The soul group has a collective consciousness, a collective potential, and collective will.

Thus the primary Soul Group is the infinite collective-consciousness of the No-thing, which consists of an infinite number of "I Am" individual conscious units.

### **-- Secondary Soul Group (SSG) --**

The secondary soul group is a large number (effectively infinite) of congruent individual conscious units which are associated with a particular area of the experiential planes. For example, all we who are on planet earth are associated with the same Secondary Soul Group.

### **-- I Am --**

- I am - consists of:
  - Consciousness - consists of:
    - Expression - of that which I am - the individual expresses what they are - a unique reflection of the source.
    - Perception - of that which I am not - the individual perceives what they are - a unique reflection of the source. However, they also perceive other 'expressions' of the source, external to themselves, which the individual is not
    - Desire - to expand that which I am by that which I am not - the individual strongly desires to explore, experience, unify, and to be expanded by that which they are not; and 'will' is the driving force

### **-- Universal Secret, Purpose, and Law --**

- The **Secret** of the universe is "Existence"
- The **Purpose** of Life is the "Expansion of Existence by personal Experience"
- The First, and Only, Universal **Law** is that "no conscious being may restrict, in any way, the expansion of another conscious being"

**-- Cycle(s) to Expand Existence/Consciousness --**

- 1) Arrival in Mortality
- 2) That which I Am (expression - the sum of my experiential cycles)
- 3) I Want/Desire (perception - that which I am not)
- 4) My Wants/Desires are realised through personal experience
- 5) I Expand that which I am by that which I am not (purpose)
- 6) Cycle back to point 2) until the conclusion of current mortal cycle
- 7) Departure from Mortality

**-- Esoteric "Big Bang" --**

As the result of the No-thing's collective conscious desire to experience, the Conscious, Mental, and Etheric Planes come into being

**-- Spirit Bodies (((+))) --**

Individual conscious elements achieve consciousness of potential by joining and expanding the Conscious, Mental, and Etheric bodies in the corresponding planes.

I move - Conscious Plane  
I see - Mental Plane  
I feel - Etheric Plane

--()--

## **The Beginning of Time**

**Note: Periods and events may be approximate**

**c.16,000 mya**

### **-- Physical "Big Bang" --**

Physical Universe comes into being, and begins to expand and unfold.  
Conscious Elements operate within, manipulate, and explore the unfolding universe in spirit form  
(conscious, mental, and etheric form).

**c.10,000 - 5,000 mya**

### **-- Home World --**

Spirits, now evolved as spirits, reside on the physical Home-World.  
Some spirits feel sterile, and desire to expand further through actual physical experience.

**c.4,600 mya**

### **-- 1st Cohort Overview --**

The 1st Cohort spirits (Rebels) question, confer, dissent, and then leave the Home-World.  
Home-World elders are not happy about the dissention and desertion.  
The 1st Cohort spirits arrive in Milky Way, find a suitable system, and begin their "Earth" program.  
See "The Earth Program - Geological Time" for more details.

### **-- Thoughtform Generators --**

After accretion of the Earth, the Genesis thoughtform generator is used to control further  
development.

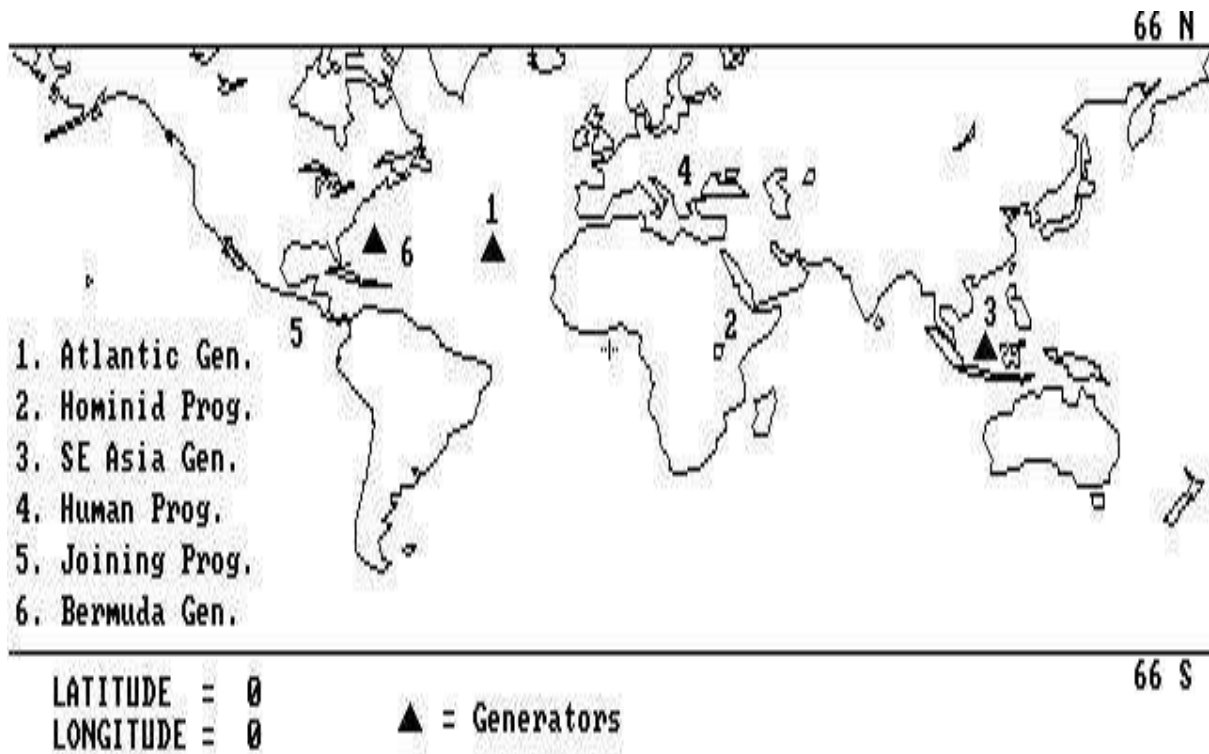
Initially, the first Genesis generator is located in a dome under the ocean.

Later, the first Genesis generator is moved to a platform in the Atlantic. Two more generators are later  
added for specific local programs

Atlantic platform Genesis Generator - 1st Cohort Worldwide Geological, Ecological, and Genetic  
development.

Generator near Bermuda - 1st Cohort South American Joining Program).

Generator in the South China Sea - 1st Cohort Sea Mammal Program.



(Picture above - Location of Generators)

#### -- Atlantis Summary --

Atlantis generates the energy (genesis generator), and controls all Earth development programs.

African Base - Hominid development.

Greek Base - Homo-genetic development ("evolving" the species).

Meso/South American Base (Mexico to Bolivia) - Joining of spirit with physical, to explore, experience, expand, and celebrate life.

#### -- Atlantean Life-form Joining Programs --

Reptile program.

Mammal and Sea mammal program.

Primate program.

Hominid program.

Modern Human program.

--()--

## The Earth Program - Geological Time

### -- Overview of the Earth Program Geological Development --

**Note: Periods and events may be approximate**

Genesis Generator  
1st Cohort Worldwide Geological,  
Ecological, Biological,  
and Genetic development.

**c.4,600 - 4,000 mya**

#### **Hadean**

Formation of Sun.  
Formation of earth.  
Formation of Moon.

3,800 mya  
Oldest known rocks on Earth.

--()--

**c.4,000 - 2,500 mya**

#### **Archean**

First Bacteria and Algae.  
Oldest known fossils.

3,500 mya  
1st Cohort develop a psychomagnetheric chemical process in sea that becomes the foundation of life.

--()--

**c.2,500 - 610 mya**

#### **Proterozoic.**

Single-celled organisms  
First Multi-cellular organisms

--()--

**c.610 - 570 mya**

#### **Vendian**

First Soft Bodied Animals

--()--

**c.570 - 510 mya**

#### **Cambrian**

Sponges  
Graptolites  
Algae  
Fungi  
Gastropods  
Bivalves  
Chitons



Cephalopods  
Trilobites  
Brachiopods  
Coelenterates (reef animals)  
Echinoderms (reef animals)  
1st Shellfish; Corals

--()--

**c.510 - 439 mya**

**Ordovician**  
Tuskshells  
1st Vertebrates  
1st Fishes  
"Jawless" fish.

--()--

**c.439 - 408 mya**

**Silurian**  
Placoderms (fish)  
1st Land plants; Eurypterids.

--()--

**c.408 - 362 mya**

**Devonian**  
1st Horsetails  
1st Clubmosses  
1st Seed ferns  
1st Ferns  
Great coal forests  
1st Insects  
1st Spiders  
1st Terapods  
1st Amphibians  
Early sharks  
Ray-finned fish  
Lobe-finned fish.

--()--

**c.362 - 290 mya**

**Carboniferous**  
Anapsids (early reptiles)  
Thecodonts (early lizards)  
1st great Reptiles  
1st Mammal-like reptiles.

--()--

**c.299 - 245 mya**

**Permian**  
1st Gymnosperms (advanced plants)  
Pareiasaurs (later reptiles)

Mesosaurs (later reptiles)  
 Advanced mammal-like reptiles  
 Ichthyosaurs  
 Plesiosaurs

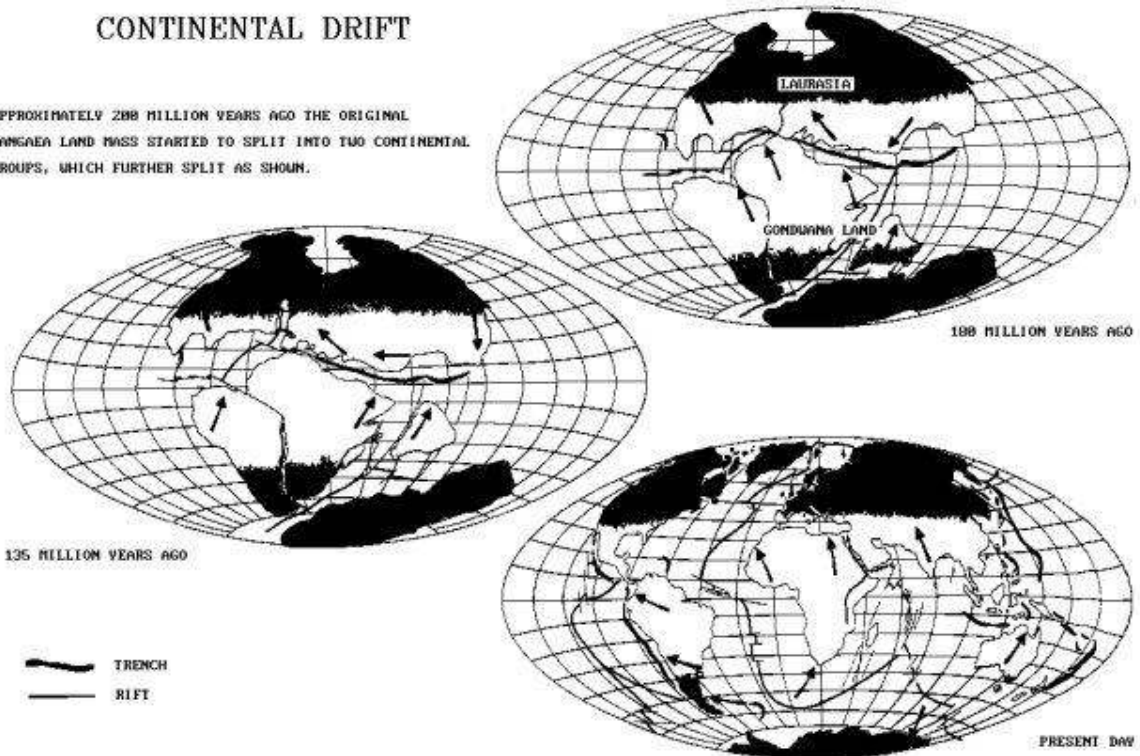
c.280 mya

Continental drift

The original Pangaea land mass has started to split into two continental groups,  
 1) Laurasia (north), and 2) Gondwana Land (south)

## CONTINENTAL DRIFT

APPROXIMATELY 200 MILLION YEARS AGO THE ORIGINAL PANGAEA LAND MASS STARTED TO SPLIT INTO TWO CONTINENTAL GROUPS, WHICH FURTHER SPLIT AS SHOWN.



Permian  
 280 mya

--()--

**c.245 mya**

**-- End Permian Extinction --**

1st Cohort reviews all programs to date.

--()--

**c.245 - 208 mya**

**Triassic**

Ichthyosaurs  
Turtles; Tortoises  
Placodonts (turtles)  
1st Dinosaurs  
Lizards  
1st Mammals  
Crocodiles  
Alligators  
Pterosaurs  
Theropods  
Sauropods  
Ornithopods

**1st Cohort institutes reptile joining program.**

**1st Cohort institutes mammal joining program.**

--()--

**c.208 - 145 mya**

**Jurassic**

1st Birds  
Later Plesiosaurs  
Later Pterosaurs  
Later Sauropods  
Stegosaurs  
Ankylosaurs  
Later Mammals.

c.180 mya

Continental Drift

Laurasia splitting from Gondwana Land,  
which is splitting from that which will later be Antarctica.  
That which will later be India is also splitting from Gondwana Land.



**Jurassic**  
**180 mya**

--()--

**c.145 - 65 mya**

### **Cretaceous**

1st Flowering plants

Snakes

Boneheads

Insectivores.

c.135 mya

Continental Drift - Laurasia (North America, Europe, Asia)  
separating northward from Gondwana Land (South America, Africa),

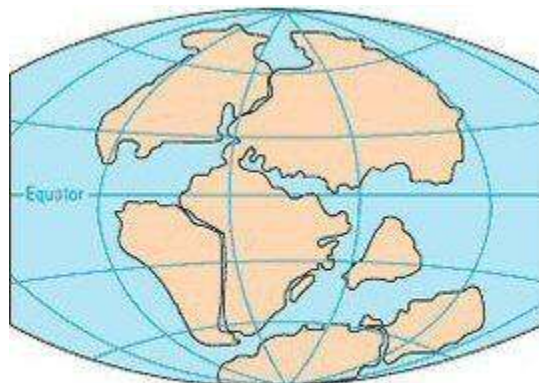
and that which will later be north America

is splitting westward from that which will later be Europe and Asia.

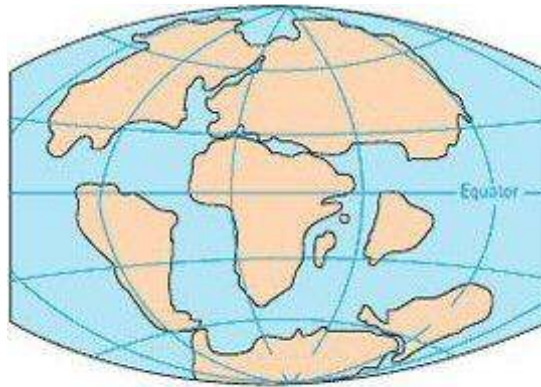
That which will later be South America is splitting westward  
from that which will later be Africa.

That which will later be India is moving northward,  
on the east side of Gondwana Land, towards that which will later be Asia.  
Gondwana Land has separated northward from that which will later be Antarctica.

Eastern Laurasia is moving south-eastward,  
and will eventually form the Australasian features.



**Cretaceous**  
**135 mya**



**Cretaceous  
65 mya**

--()--

**c.65 mya**

**-- End Cretaceous Extinction --**

1st Cohort experiences total failure with Reptile joining.  
Comet strikes Earth in Gulf of Mexico area.  
Large reptiles (dinosaurs) become extinct.

**1st Cohort Reptile program defunct.**

--()--

**c.65 - 57 mya**

**Palaeocene (Tertiary)**

Seals; Sea-lions

Whales; Dolphins

Sea cows

Rodents

Bats

Varied browsers

Advanced Birds

1st Elephants

Armadillos

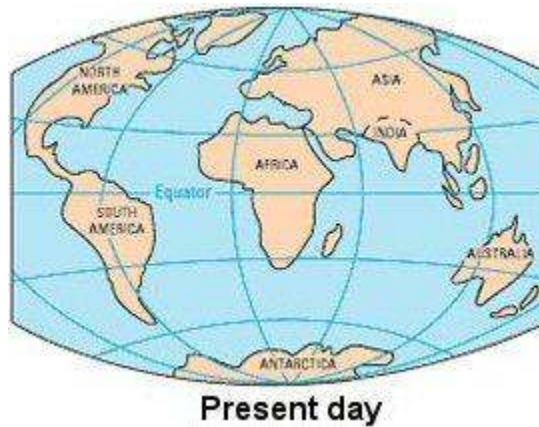
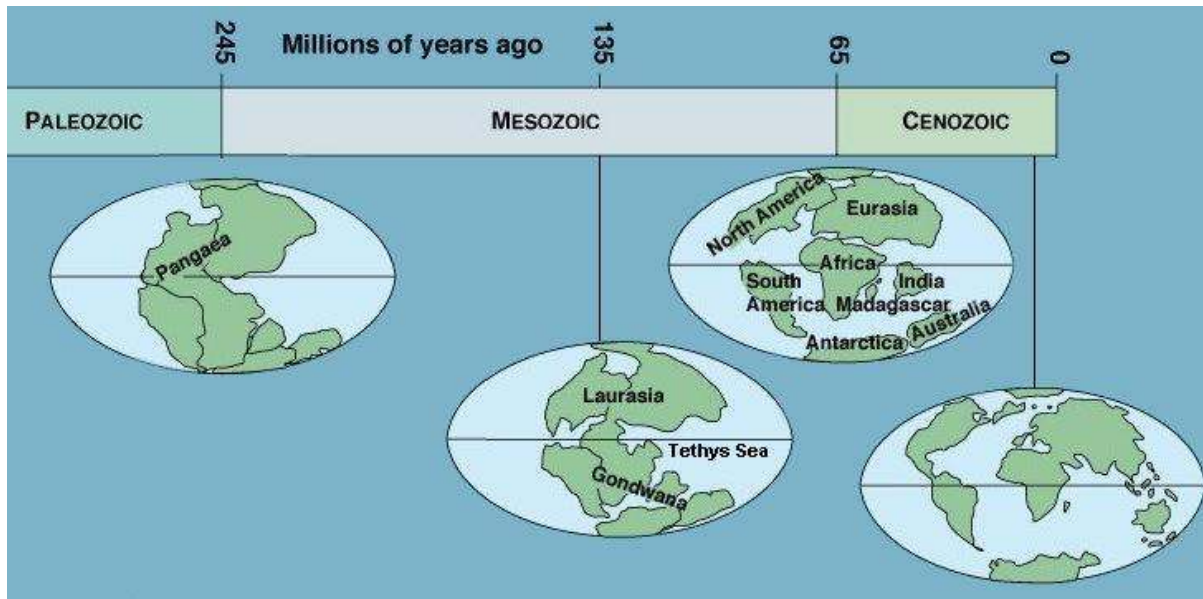
Prosimians (before the monkey)

**1st Cohort institutes sea mammal joining program.**

--()--

**-- Continental Drift Summary--**

**Note: Periods and events may be approximate**



--()--

c.57 - 34 mya

#### **Eocene (Tertiary)**

1st Horses  
Rhinoceroses  
Brontotheres  
1st Monkeys.

--()--

c.34 - 23 mya

#### **Oligocene (Tertiary)**

1st Apes  
Mammoths  
Mastodons  
Edentates (Toothless)  
Anteaters  
Ground Sloths  
Glyptodonts.

**1st Cohort institutes primate joining program**

--()--

**c.23 - 5 mya**

**Miocene** (Tertiary)

South American specialized plant eaters

South American Marsupial Meat Eaters

Australian Marsupials

1st Hominids

**1st Cohort institutes hominid joining program**

--()--

**c.5 - 2.5 mya**

**Pliocene** (Tertiary)

Pigs

Camels

Giraffes

Deer

--()--

**c.2.5 mya - Present**

**Pleistocene & Holocene** (Quaternary)

1st Modern humans

c.100 kyo Homo Sapiens

--()--



## **The Time of Joining**

**Note: Periods and events may be approximate**

-- Overview --

- 1st Cohort experienced no success with reptile, mammal, or pre-simian joining.
- 1st Cohort experienced promising results with sea mammal (dolphin and whale) joining.
- 1st Cohort experienced minimal success with primate joining.
- 1st Cohort experienced moderate success with early hominid joining.
- 1st Cohort experienced success with Neanderthal joining.
- 1st Cohort experienced success with Cro-Magnon joining.
- 1st Cohort experienced success with Homo Sapiens joining - The breakthrough in joining accomplished.

**c.38 mya**

### **-- Primate Program --**

1st Cohort institutes primate program.

- Aegyptopithecus (c.38 - 32 mya).
- Dendropithecus (c.24 - 17 mya).
- Proconsul (c.26 - 13 mya).
- Afropithecus (c.18 - 15 mya).
- Kenyapithecus (c.16 - 14 mya).
- Sivapithecus (c.14 - 5.5 mya).
- Pilopithecus (? c.8 - 14 mya).
- Oreopithecus (c.8 - 6 mya).
- Dryopithecus (c.12 - 9 mya).

**1st Cohort experiences minimal success with primate joining.**

--()--

**c.3 mya**

### **-- Hominid Program --**

1st Cohort institutes hominid joining program.

- Australopithecus Afarensis (c.3 - 2.5 mya).
- Australopithecus Africanus - Homo '1470' Man (c.3 - 2.5 mya).
- Paranthropus Aethiopicus (c.2.5 - 2 mya).
- Paranthropus Robustus (c.2 - 1.5 mya).
- Paranthropus Boisei (c.2 - 1.5 mya).
- Homo Habilis (Small) (c.2.5 - 1 mya).
- Homo Habilis (Large) (c.2.5 - 1 mya).
- Homo Erectus (Africa) (c.1.5 mya - 250 kyo).
- Homo Erectus (Peking Man) (c.1 mya - 250 kyo).
- Homo Erectus (Java Man) (c.1 mya - 250 kyo).
- European Hominids with Archaic Features (c.250 kyo - 40 kyo).
- African Archaic Hominids (c.250 kyo - 30 kyo).
- Homo Sapiens (Neanderthal) (c.40 kyo - present) (c.100 kyo - present, Author).
- Homo Sapiens (Cro-Magnon) (c.40 kyo - present) (c.100 kyo - present, Author).
- Homo Sapiens Sapiens (Anatomically Modern Humans) (c.40 kyo - present) (100 kyo - present, Author).

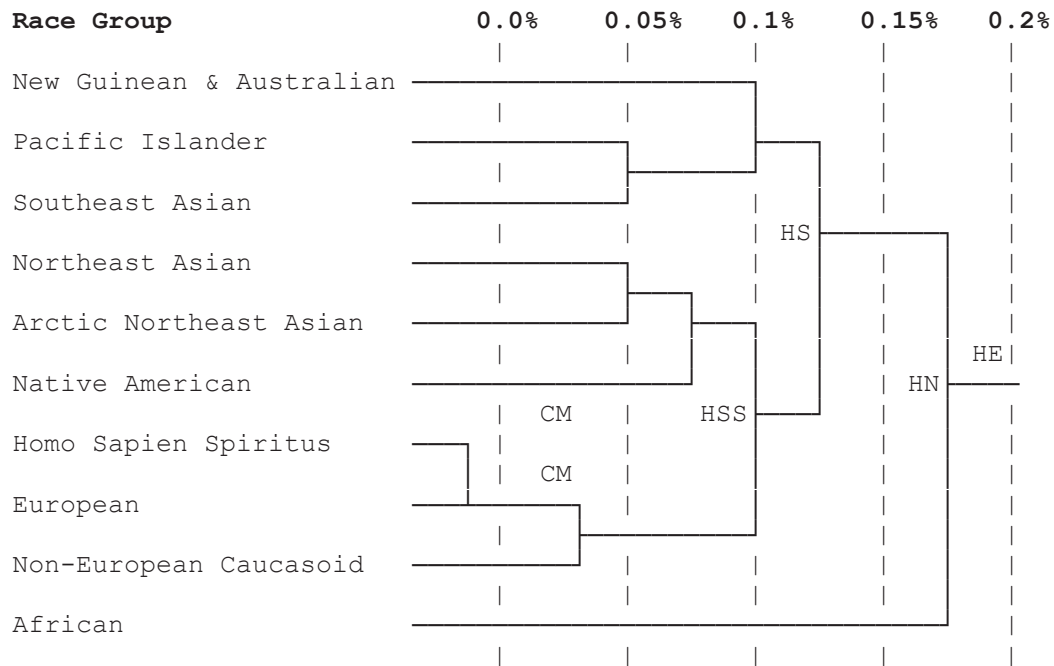
**1st Cohort experiences complete success with Homo Sapiens Sapiens (modern human) joining.**



-- The breakthrough in joining accomplished --

-- Modern Man's Genetic Record --

**Genetic Distance**



**Legends**

HE - Homo Erectus  
 HN - Homo Neanderthal  
 HS - Homo Sapiens  
 HSS - Homo Sapiens Sapiens  
 CM - Cromagnon

--()--

## **Controversy, Dissent, and Cohortic Wars**

**Note: Periods and events may be approximate**

**c.100,000 - 40,000 BC**

**1st Cohort experience moderate success with hominid joining.**

**-- The 2nd Cohort --**

Home-World threatened by 1st Cohort's knowledge through their development programs, and decide to curtail 1st Cohort.

Home-World dispatches 2nd Cohort task force.

2nd Cohort arrives on Earth in spirit form.

2nd Cohort establishes a base in Southeast Asia.

2nd Cohort commandeers South China Sea Generator (sea mammal program suspended) to power their programs.

2nd Cohort have no knowledge of the 1st Cohort Meso-American base, or of the Sea mammal program they interrupted.

2nd Cohort concentrates on the destruction of the European base, the Atlantic platform (genesis generator), and the Bermuda generator.

2nd Cohort perceives the Atlantic platform and Bermuda as "one" generator.

**c.40,000 BC**

**1st Cohort experiences success with Cro-Magnon joining.**

1st Cohort exports "human vehicles" from Europe to Meso-America.

2nd Cohort joins with Southeast Asian Hominids.

2nd Cohort is unsuccessful with Hominid genetic manipulation (Southeast Asia, New-Guinea, Australia).

2nd Cohort Southeast Asian Base reaches its zenith.

2nd Cohort starts their westward aggressive advance destroying all before them.

**c.40,000 - 29,000 BC**

Cro-Magnon people move into Europe from Asia.

**c.35,000 BC**

1st Cohort Atlantean Meso-American base reaches its zenith.

2nd Cohort westward aggressive advance continues unabated.

**c.30,000 BC**

**1st Cohort experience complete success with Homo Sapiens Sapiens (modern human) joining.**

1st Cohort continues to export human vehicles from Europe to Meso-America.

1st Cohort is numbered in "millions" in Meso-America.

**-- The First Cohortic War --**

2nd Cohort joins with male forms, which provide a basic war machine.

2nd Cohort westward aggressive advance is now well established.

**c.30,000 - 20,000 BC**

Humans appear in Australia.

## **c.30,000 - 10,000 BC**

Early (Homo Neanderthal) Humans replaced by Hunters in Africa.

## **c.28,000 BC**

Homo-Sapiens cross land bridge from Asia to North America.

## **c.25,000 BC**

### **-- Evacuation --**

2nd Cohort advance and victory is unstoppable.

1st Cohort decision to evacuate Meso-America.  
Portals established.

2nd Cohort reaches North Africa and southern Europe.  
Many of 1st Cohort Greek Base flees northward and north-eastward.  
Some of 1st Cohort joins with Cro-Magnon and Homo-Sapiens in Europe.

## **c.20,000 BC**

### **-- The Second Cohort War --**

1st Cohort joins with male form to counteract the 2nd Cohort onslaught - to no avail (too little and too late).

Survivors of 1st Cohort Greek Base flee northward and north-eastward.  
More of 1st Cohort joins with Cro-Magnon and Homo Sapiens in Europe.  
2nd Cohort destroys Greek Atlantean Base.

2nd Cohort enlists aid from Home World to destroy Atlantean Atlantic platform (genesis generator).  
Home-World fires upon energy sources in Atlantic (platform and Bermuda).

Atlantean Atlantic Platform fires upon Home-World, and the merging energy beams causes a Space-Time rip of 1 millisecond.

The energy beam from the Atlantic Platform lays waste the Home World.

2nd Cohort loses contact with Home-World (because of Space-Time rip).

### **-- Evacuation --**

1st Cohort decides to evacuate European Atlanteans.  
Portals set up.

1st Cohort evacuation of European Atlanteans from northwest France, and finally southwest England

2nd Cohort infiltrates the Atlantean Atlantic Platform with a bogus "High Priest".  
Power-grid of Atlantic Platform and Bermuda destabilized, and 2nd Cohort open fire.  
Destruction of Atlantic Platform, and damage to Bermuda generator.  
As Atlantis sinks, it destroys the 2nd Cohort's Southeast Asian Base.

### **-- Loss of Generators --**

Loss of Atlantic Genesis Generator.  
Loss of Bermuda Generator.  
Loss of south China Sea Generator.

### **-- Loss of Control --**

Loss of worldwide Geological, Ecological, Biological, and Genetic control.

Amnesia and Reincarnation begin for both 1st and 2nd Cohort in consequence of the loss of the Genesis generator.

The remnant of the 1st and 2nd Cohorts join with the available herds of Homo Sapiens in Africa, Europe, and Asia.

Both 1st and 2nd Cohort continues to join with both male and female forms.

**c.19,000 BC**

**-- Search --**

2nd Cohort realise that something's wrong - they still can't contact the Home-World.

2nd Cohort searches out pure 1st Cohort genetics from the remnant, to evaluate why there is no contact with the Home-World.

2nd Cohort learns of the Space-Time rip, and attempts to build a new Genesis generator.

**c.18,000 BC**

**-- Sphinx --**

2nd Cohort builds the Sphinx - 1st attempted genesis generator.  
Generator doesn't work.

**c.18,000 - 16,000 BC**

**-- Pyramids --**

2nd Cohort builds the Pyramids at Giza - 2nd attempted genesis generator.  
2nd Cohort tries to re-establish contact with the Home-World via pyramids.  
Pyramids don't work.

**c.16,000 - 10,000 BC**

Hunter gatherers roam Southern Europe.

**c.15,000 BC**

1st Cohort continues to migrate north, north-West, and north-East.  
Some of 1st Cohort who earlier joined with Cro-Magnon and Homo Sapiens cross the Bearing Strait (c.15,000 - 10,000 BC), and they become the north American Red-Indian.

2nd Cohort abandon pyramid project.  
2nd Cohort returns to Southeast Asia, and create the "Modern" Civilizations on their return to Southeast Asia.

Reincarnation amnesia is now very bad and the 2nd Cohort has forgotten who they are and what their purpose is. Consequently, they migrate eastward, following an instinct within them that generates an overwhelming desire to go home.

**c.10,000 BC**

**-- End of last Ice Age --**

c.10,000 BC Hunters reach tip of South America and South Africa

--()--

## **Modern Civilizations**

As the 2nd Cohort returns to Southeast Asia,  
they create the "Modern" Civilizations.

**c.8,000 BC**

Eastern Anatolia (Turkey)  
Early settled villages and farming.

**c.6,000 - 5,000 BC**

Crete  
First Settlements.

**c.5,000 BC**

China  
Early village farm communities along Hwang-ho River.

Sumer  
1st agricultural settlements in river valleys  
of the Tigris and Euphrates.

Sea separates Britain from Europe.

**c.5,000 - 2,000 BC**

Africa  
Farming spreads south in Africa.

**c.4,000 BC**

Egyptian Civilization  
Two kingdoms of upper and lower Egypt established.

### **Egyptian Dynasties:**

1-2 Early Dynastic 3100 - 2686 BC.

3-6 Old Kingdom 2686 - 2181 BC.

7-10 First Intermediate 2181 - 2133 BC.

11-12 Middle Kingdom 2133 - 1786 BC.

13-17 Second Intermediate 1786 - 1567 BC.

18-20 New Kingdom 1567 - 1080 BC.

21-25 Late New Kingdom 1080 - 664 BC.

26 Sait 664 - 525 BC.

27-31 Late 525 - 332 BC.

Ptolemaic 332 - 30 BC.

Roman 30 BC - 642 AD.

Arab 642 AD - Present.

**c.4,000 BC**

Sumerian Civilization  
Growth of city states.  
Sumerian Civilization ends c.1,900 BC.

c.3,100 BC

Sumerians develop 1st known system of writing.

c.4,000 BC

The wheel in Mesopotamia.

### **c.3,000 BC**

Early Minoan Civilization - Crete.

c.3,000 BC - c.2,000 BC, Stone villages in Crete.

Minoan Civilization ends c.1,400 BC

Iran

Elamite Civilization in Iran Established.

Mexico

Development of agriculture in Tehuacan valley, Mexico.

India

c.3,000 BC - c.1,500 BC

Pre-Vedic period of Hinduism (Karma)

1st of 4 periods.

### **c.2,780 BC**

Egypt

Traditional date for 1st pyramids in Egypt.

c.2700 - Cheops rules Egypt,

and traditional regarded as the builder of  
the great pyramid.

### **c.2,500 BC**

Peru

c.2,500 - 2,000 BC

1st Andean culture, crop growing, and use of stone.

c.2,000 BC

Central Meso-America, growth of village communities,  
use of stone, pictograph writing.

Indus Valley early Civilization

Harappa and Mohenjo-daro founded.

Yellow Valley early Civilization

First settlements in Hwang-ho valley.

Minoan Civilization, Crete

Foundation of Knossos.

### **c.2,300 BC**

Assyrian and Babylonian Empires

Semites from Arabia migrate to Mesopotamia  
to found Assyrian and Babylonian Empires.

### **c.2,200 BC**

Greek speakers arrive in Crete.

Linear (A) Minoan writing.



Linear (B) Greek writing.

**c.2,150 BC**

Aryans invade Indus Valley.

**c.2,100 BC**

Rise of Hebrew culture  
Semites from Ur, under Abraham, wander to Palestine.  
The development of Cabalism and Jewish Saviourism.

**c.2,000 BC**

Beginnings of great Bantu migrations,  
East and South from West Africa.

c.2,000 BC  
Hittites move into Anatolia (Modern Turkey).  
Hittite Empire ends c.1,200 BC.

**c.1,920 BC**

Assyrian Empire ends c.612 BC.

**c.1,900 BC**

Babylonian Empire ends c.538 BC.

Mycenae Empire ends 1,100 BC.

**c.1,500 BC**

Phoenician Empire ends c.500 BC.

India  
c.1,500 BC - c.700 BC  
Vedic period of Hinduism (Karma)  
2nd of 4 periods.

Modern Hinduism developed from this source.

**c.1,300 BC**

Medes and Persians move into Iran.

Peru  
c.1300 BC - 400 AD  
Rise of Chavin de Huanter culture.

**c.1,200 BC**

Devastation through Asia Minor, the Near East,  
and the Greek World by "Sea People".

**c.1,100 - 1,050 BC**

Dorian invasion of Greece.

Greek Empire Established, which ends c.196 BC  
when it becomes part of the Roman Empire.

**c.1,000 BC**

Rig Veda religious text compiled in India.

Egypt  
Overrun by Assyrians.

**c.835 BC**

Medes Empire Established, which ends 550 BC.

**c.814 BC**

Carthage Established.

**c.753 BC**

Rome Founded.  
Empire Established 27 BC, which ends c.476 AD.

**c.700 BC**

India  
c.700 BC - c.200 BC  
Upanishadic period of Hinduism (Karma)  
3rd of 4 periods.

**c.563 - 483 BC**

Life of Siddhartha Gautama,  
and the foundation of Buddhism (Karma).

**c.559 BC**

Persian Empire Established.

**c.551 - 479 BC**

Life of Confucius and foundation of Confucianism.

**c.525 BC**

Egypt  
Overrun by Cambyses of Persia.

**c.500 BC**

Bantu peoples spreading in East Africa.

Guatemala and Honduras  
c.500 BC - 900 AD  
Rise of Mayan culture.

The Mayan culture decline after 900 AD,  
and merge with the Toltec culture from Mexico.

**c.400 BC**

Peru  
c.400 BC - 400 AD  
Rise of Paracas culture.

**c.330 BC**

Egypt  
Conquest of Alexander the Great,  
and the foundation of Alexandria c.300 BC.

**c.214 BC**

China  
The Great wall is constructed.

**c.200 BC**

Essenes  
Qumran and the Teacher of Righteousness.

India  
c200 BC - 200 AD  
Revival period of Hinduism (Karma)  
4th of 4 periods.

**c.27 BC - 476**

Roman Empire

--()--

## Modern Times

**Note: Periods and events may be approximate**

Note: Unless otherwise indicated, all dates are AD

1

The dawn of Christianity (Saviourism).

33 - 156

China  
Taoism flourishes.

43

Britain  
Invasion by Claudius of Rome.

58

China  
Buddhism introduced.

70

Jews  
1st Diaspora (dispersal) of Jews.

135

Jews  
Final Diaspora (dispersal) of Jews.

21st March 222, 1:22pm UT

The Start of the Piscean Age.

226

Persia  
Zoroastrianism becomes the official religion.

246

Persia  
Manichaeism founded.

313

Emperor Constantine the Great  
issues Edict of Toleration for Christianity at Milan.

400

Peru  
400  
Rise of Nazca culture.

	400 - 700	Rise of Mochica culture, and decline of Nazca culture.
	500 - 700	Pyramid of Sun, built by Mochicas.
410	Britain	Britain abandoned by Rome.
478	Japan	Foundation of Shinto religion.
622	Islam	The dawn of Islam (Saviourism) The 'Hegira' Muhammad born 570 Muhammad flees from Mecca c.622.
700	Peru	c.700 - 1532 Rise of Inca culture.
800	Mexico	c.800 - 1000 Rise of Toltec culture.
1095 - 1291	The Christian Crusades:	1st Crusade c.1095 - 1099. 2nd Crusade c.1147 - 1149. 3rd Crusade c.1189 - 1195. 4th Crusade c.1202 - 1204. Children's (50,000) Crusade - c.1212. 5th Crusade c.1217 - 1222. 6th Crusade c.1228 - 1229. 7th Crusade c.1284 - 1270.
		1291 - Christians finally driven out of Holy Land.
1235 - 1772		Catholic Inquisition.
1300	Mexico	c.1300 - 1519 AD

	Rise of Aztec culture.
<b>1348</b>	
	Black Death ravages Europe.
<b>1420</b>	
	1st English version of Bible by Wycliffe.
<b>1453</b>	
	Dawn of Renaissance.
<b>1454</b>	
	First printing using movable type by Johannes Gutenberg.
<b>1478 - 1834</b>	
	Spanish Inquisition.
<b>1492</b>	
	America discovered by Columbus.
<b>1517</b>	
	Dawn of the Reformation Martin Luther and his Ninety-five Theses.
<b>1519</b>	
	Mexico Hernan Cortes conquers the Aztecs.
<b>1532</b>	
	Peru Pizarro captures the Inca capital, Cuzco, and conquers the Incas.
<b>1534</b>	
	Henry VIII becomes supreme head of the English Church.
<b>1611</b>	
	King James Version of the Bible.
<b>1620</b>	
	America Pilgrim Fathers arrive.
<b>1665</b>	
	Great Plague of London.

**1775**

Steam engine  
invented by James Watt (GB).

**1776**

Illuminati  
Founded by Adam Weishaupt,  
an ex-Jesuit and renegade Freemason.

**1789**

French Revolution  
France is declared a republic in 1792.

1789  
George Washington is the 1st President of the US.

**Late 1700's**

Rothschild  
Banking established in Europe.

**1815**

Battle of Waterloo where Napoleon is defeated.

**1831**

Electricity  
Dynamo and transformer developed by Michael Faraday.

**1886**

Coca Cola created by Dr J. Pemberton (US),  
which is an "Esteemed Brain Tonic and Intellectual Beverage".

**Late 1800's - Early 1900's**

Industrial Revolution in Europe and United States.

--()--

## **The 20th Century and Beyond**

**Note: Periods and events may be approximate**

**1914 - 1918**

1st World war - 28 June 1914  
Assassination of Arch Duke Ferdinand of Austria.

**1917 - 1918**

Russian Revolution, March 1917.

**1919**

League of Nations - Founded.  
League of Nations - dissolved 18th April 1946.

**1939 - 1945**

2nd World War  
Germany invades Poland, 1 September 1939.

**1941**

Japan  
Attacks US fleet at Pearl Harbour.

**1945**

Atomic bomb dropped on Hiroshima in Japan - August 1945.  
Atomic bomb dropped on Nagasaki in Japan - August 1945.

United Nations founded

**1948**

Transistors developed (US)

Israel  
State created 1948

**1953**

DNA Discovered (GB).

**1957**

"Space Age" begins  
Russians launch Sputnik 1

**1961**

Russia  
1st man in space - Yuri Gagarin

**1963**

Assassination of US President J. F. Kennedy,  
22nd November 1963, Dallas Texas



**1967**

Six-day war,  
June 5th - 10th, between Israel and Arabs

**1968**

Assassination of Robert Kennedy

**1969**

Moon landing by US, Neil Armstrong

**1970's**

AIDS  
Because of the loss of the Genesis generator,  
the genetic time-bomb finally goes off within man,  
and he faces extinction (AIDS, etc).

**1970's**

The development of the silicon chip and micro technology

**1974**

US President Richard Nixon resigns  
in consequence of the Watergate scandal

**1986**

Chernobyl nuclear accident - core meltdown and explosion

**1994**

Shoemaker/Levy Comet

**Late 1990's**

Keys and Markers to Secret and Purpose discovered.  
The Remembering.

**2000**

The star called "Wormwood" appears

**21th March 2375, 05:00am UT**

The Start of the Aquarian Age.

--()--

## Appendix

### Universal Planes

#### SOURCE

**Source Plane** - (Existence) Infinite origin of all things, and sum of all consciousness  
 All things in infinite impotent balance, every-thing, but the no-thing  
 Source Will - to experience itself by infinite fragmentation and recombination

An Infinite number of conscious elements +++++  
 The Universal collective consciousness (the sum of all Existence)

**Primary Soul Group**, PSG (We Are) ... +++...  
 Pool containing finite number of Conscious elements (We Are)  
 The soul group collective consciousness, collective potential, and collective will

Individual Consciousness (I Am) + - Perception-only ...+...

**Perception** - That which I am, and that which I am not

**Expression** - That which I am

**Will** - To expand 'that which I am' by 'that which I am not'

**Facet** - The Soul (Consciousness - No body) **(Collective Will Causes Big Bang)**

#### SPIRIT WORLD

#### (Manifested Immaterial and material Universe)

**Conscious Plane** (CP) - White Light  
 Conscious Body ( + )  
 Perception - un-accreted infinite energy  
 I Move (Projection) - **Perception-only**

The **Spirit World** - composite of  
 Conscious, Mental, and Etheric planes.

**Mental Plane** (MP) - Bands of Colour  
 Mental Body ( ( + ) )  
 Perception - energy bands course to fine  
 I See (Cognition) - **Perception-only**

The **Spirit-Form** - composite of  
 Conscious, Mental, and Etheric bodies.

**Upper 2/3** (CP+MP) of Spirit world is  
 the PSG's collective energy.

**Etheric Plane** (EP) - Shades of colour  
 Etheric Body ( ( ( + ) ) )  
 Perception - symbols  
 I Feel (Intuition) - **Experiential**

**Lower 1/3** (EP) of Spirit world is the  
 idealised reflection of the Physical Plane.  
 This is 'home' between incarnations, and  
 contains the spirit 'Summerland' and the  
 Secondary Soul Group (SSG).  
 Incarnation staging point.

**Perception** - Feelings, and symbols

**Expression** - Telepathy

**Facet** - The Spirit (Spirit-form)

**Contact** - Physical World can be contacted via Spirit-form

**(As above so below)**

#### PHYSICAL WORLD

#### (As below so above)

**Physical Plane** (PP) - Experiential three dimensions, and five senses

**Contact** - Spirit World can be contacted via Spirit-form

Physical body ( ( ( [ + ] ) ) )

I Sense (Sensation) - **Experiential**

The Physical universe - manifestation  
 of the PSG collective potential.  
 Consciousness is expanded through  
 experience in the Physical and Etheric  
 planes.

**Perception** - Physical senses

**Expression** - Physical Communication

**Facet** - The Experiential Body of Matter (Physical body)

#### SUB-PHYSICAL

Possible entrapment  
 in low vibration material

## Legends and Definitions

**+...+...+** - Conscious elements within the Source/Primary Soul Group.

**(((+[+])))** - Complete experiential being (consciousness, spirit-form, and physical body).

**+** - Individual consciousness or conscious element (I Am).

**[ ]** - Physical body (I Sense) - Experiential.

**( )** - Etheric body (inner layer of Spirit-form - I Feel) - Experiential.

**( )** - Mental body (middle layer of Spirit-form - I See) - Perception-only.

**( )** - Conscious body (outer layer of Spirit-form - I Move) - Perception-only.

**PSG** - Primary Soul Group. Contains a finite number of conscious elements (Perception-only).

**CP** - Conscious Plane (Perception-only).

**MP** - Mental Plane (Perception-only).

**EP** - Etheric Plane (Experiential).

**PP** - Physical Plane (Experiential).

**Source** - Infinite origin of all things, and sum of all consciousness.

**Spirit World** - Composite of conscious, mental, and etheric planes. Perceived by the spirit-form.

**Spirit-form ((( + )))** - Composite of conscious, mental, and etheric bodies.

**Conscious Plane + Mental Plane** - Planes of energy potential.

**Etheric Plane + Physical Plane** - Planes of actual experience (spirit and physical).

**Universe (Physical Plane)** - Physical manifestation of the PSG's collective potential. Perceived by the physical body.

**3 Dimensions** - Length, width, and height.

**5 Senses** - Taste, touch, sight, smell, and hearing.

**White Light** - The collective energy potential of the PSG. Composite of red, orange, yellow, green, blue, indigo, and violet.

**Bands of Colour** - Perceived collective energy potential of PSG.

**Shades of colour** - Perceived symbols, emotional potential, and the idealized reflection of the physical plane.

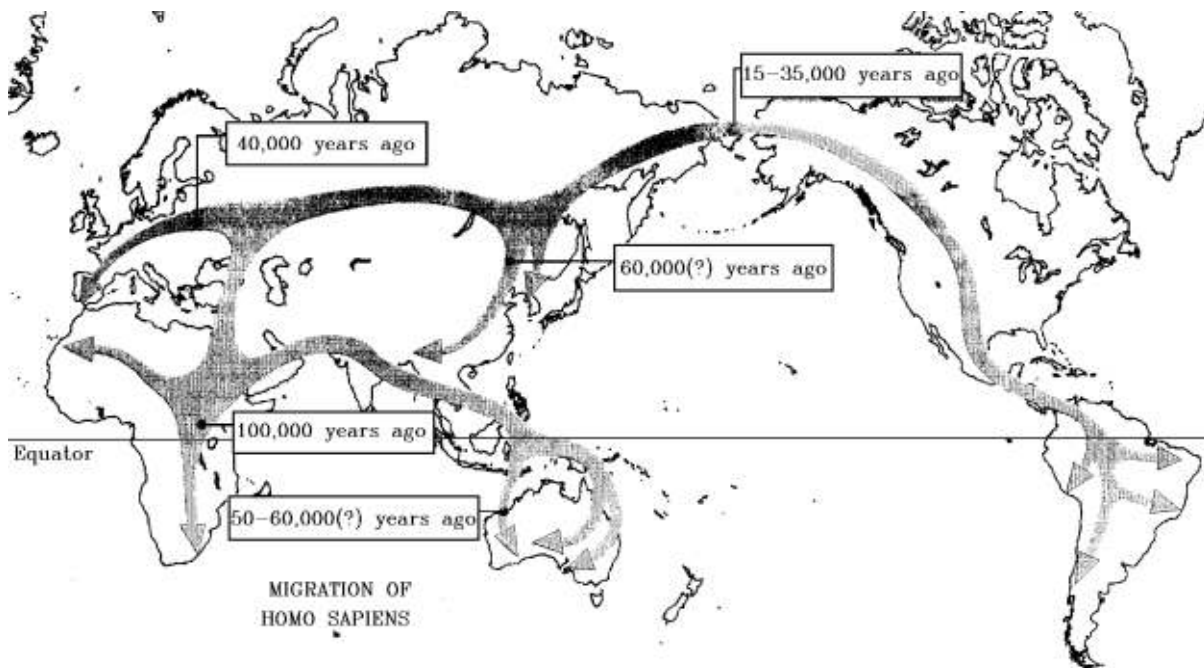
**Aura** - Composite of genesis field, etheric, mental, and conscious bodies.

End

--()--

## Appendix

### Movement of Early Man



Movement of Early Man	
Date	Description
40,000 - 29,000 BC	Cro-Magnon people move into Europe from Asia
30,000 - 20,000 BC	Humans appear in Australia
30,000 - 10,000 BC	Early (Neanderthal) Humans replaced by Hunters in Africa
28,000 BC	Homo-Sapiens cross land bridge from Asia to North America
16,000 - 10,000 BC	Hunters roam Southern Europe
10,000 BC	Hunters reach tip of South America and South Africa
6,000 BC	First Settlements in Crete
4,000 BC	Egyptian Civilization - Two kingdoms of upper and lower Egypt established.
2,300 BC	Semites from Arabia migrate to Mesopotamia to found Assyrian and Babylonian Empires
2,200 BC	Greeks arrive in Crete
2,150 BC	Aryans invade Indus Valley
2,100 BC	Abraham migrates from Ur

Movement of Early Man	
Date	Description
2,000 BC	Beginnings of great migrations East and South from West Africa. Hittites move into Anatolia (Modern Turkey) Yellow Valley early Civilization - First settlements in Hwang-ho valley.
1,300 BC	Medes and Persians move into Iran.
1,200 BC	Devastation through Asia Minor, Near East, Greek World, by Sea People
1,100 - 1,050 BC	Dorian invasion of Greece
500 BC	Bantu peoples spreading in East Africa

--()--

**Appendix**  
**Human Longevity**

<b>Human Longevity</b>	
<b>Period</b>	<b>Typical Life Span</b>
Neanderthal	20
Medieval England (5th century to 15th Century)	33
Late 18th Century	37
Early 20th Century	50
c.1940	65
c.2000	77 - 79

--()--

## Appendix

### General Longevity

The following table compares the life expectancy of various life-forms:

Note: unless otherwise stated, figures are years.

Longevity		
Unless otherwise stated, figures noted are years		
Life-Form	Usual Span	Maximum Span
Whale (Bowhead)	-	200+
Shark (Greenland)	-	200
Tortoise (Giant)	150 - 177	180
Human	70-80	Possible 100 - 140
Box Turtle	-	100+
Carp	-	100
Alligator	40 - 50 in Zoo	Possible 100 in the wild
Parrot	-	80+
Elephant (Indian)	-	78
Sturgeon	-	70+
Whale (Grey)	-	70
Pigeon	-	69
Eagle Owl	-	68
Condor	-	65
Macaw	-	64
River Mussel	-	60 - 100 (depends upon type)
Halibut	-	60 - 65
Cockatoo	-	60+
Elephant (African)	-	60
Catfish	-	60
Chimpanzee	-	55+
Orang-utan	-	55+
Salamander	-	55
Eagle	-	55
Eel	-	55
White-throated Capuchin	-	50+
Giant Salamander	-	50+
Parrot (African)	-	50
Whale (Humpback)	-	50
Carp	-	50

Longevity		
Unless otherwise stated, figures noted are years		
Life-Form	Usual Span	Maximum Span
Goose	-	50
Ostrich	-	50
Sturgeon	-	50
Rhinoceros (Indian)	-	47
Bear (Grizzly)	-	47
Seal (Grey)		46
Baboon (Yellow)	-	45
Hippopotamus	-	42
Horse	20 - 25	40 - 50
Whale (Killer)	-	40+
Gorilla	-	40+
Clam	-	40
Giant Clam	-	40+
Goldfish	-	40
Lion	20 - 25	40
Toad	-	36
Newt	-	35
Bobcat (Lynx)	-	34
Polar Bear	16	33
Sloth (Three Toed)	-	30 - 40
Cow	-	30+
Pigeon	-	30+
Dolphin	-	30
Bullfrog	-	30
Greater Horseshoe Bat	-	30
Ox	-	30
Monkey (Rhesus)	-	29
Chaffinch	-	29
Cat	10 - 12	27 - 31
Dog (domestic)	10 - 13	26
Camel (Bactrian)	-	25.5
Goldfish	-	25
Kangaroo (Grey)	-	24
Monkey (Verve)	-	24
Lion	-	24



Longevity		
Unless otherwise stated, figures noted are years		
Life-Form	Usual Span	Maximum Span
Gibbon	-	23+
Sparrow	-	23
Bison (American)	-	22.5
Elk	-	22
Canary	-	22
Bear (Polar)	-	21
Porcupine (African)	-	20+
Sheep	-	20+
Most Snakes	-	20 - 30
Mountain Lion	-	20
Llama	-	20
Wolf (grey)	-	20
Tiger	-	20
Leopard	-	20
Jaguar	-	20
Gila Monster	-	20
Giant Spider	-	11 - 20
Boar (Wild)	-	19.5
Beaver	-	19
Bear (Black)	-	18
Cicada	-	17
Horseshoe Bat	-	16 - 18 in the Wild
Puma	-	16
Spider (Bird)	-	15
Lobster	-	15
Rabbit	5 - 7	15 - 18
Fox	-	15
Cow	-	15
Tarantula	-	15
Ant	-	15
Bush Baby	-	14+
Frog	-	12-16
Moose	-	12
Chipmunk	-	12
Vampire Bat	-	12

Longevity		
Unless otherwise stated, figures noted are years		
Life-Form	Usual Span	Maximum Span
Squirrel	-	10 - 14
Guinea	4 - 5	10 - 12
Ferret	-	10
Giraffe	-	10
Pig	-	10
Earthworm	-	10
Large Beetle	-	Up to 10 years as adults (larval life may be very long)
Deer (White-Tailed)	-	8
Chicken	-	8
Humming Bird	-	8
Goat	-	8
Chinchilla	-	6.5
Guppy	-	5-6
Dormouse	-	5.5
Queen Bee	-	5+
Rabbit (Domestic)	-	5
Guinea Pig	-	4
Hamster	-	4
Bluejay	-	4
Nightingale	-	3.8
Mouse	-	3
Harvest Mouse	-	2.5
Short-tailed shrew	-	2.2
Opossum	-	1
Newt	-	36 weeks
Bee (Worker)	-	5 Weeks
House Fly (Adult)	-	4 Weeks
Fruit Fly	-	30 - 40 Days
Mayfly	0.5 - 1 Day	7 Days
Spider (House)	-	3 - 4 Days

End

--()--

<http://campbellmgold.com>

